

/18

product catalog

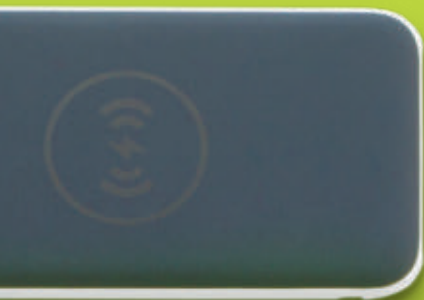
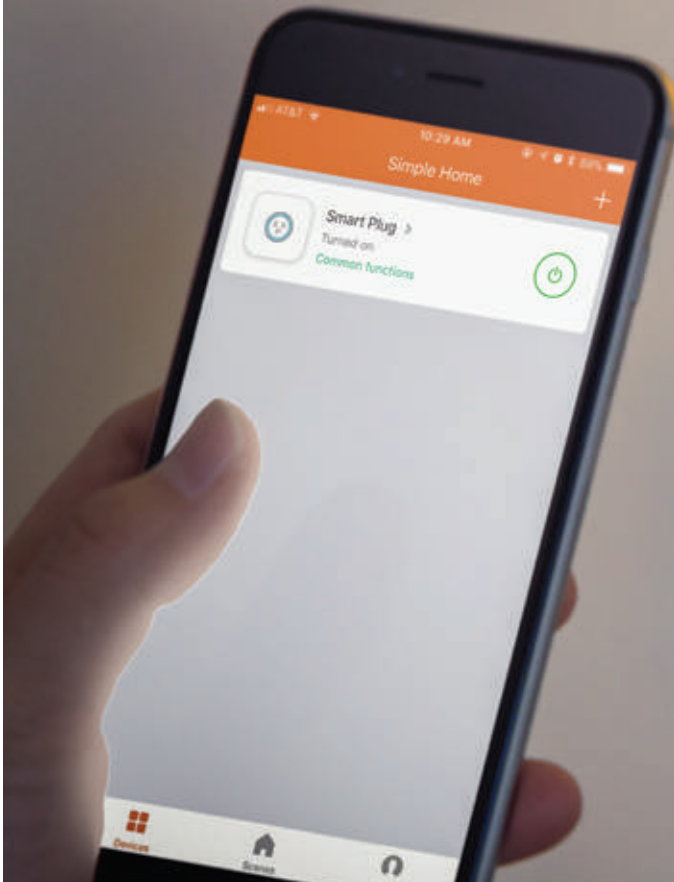




table of contents

smart home	4
PD adapter	6
adapter	8
MFi	13
cable	19
wireless mouse	25
qi wireless charger	27
power bank	30
bluetooth	59
audio	83
gift set	86
index	113
general information	114
imprint information	115

smart plug, smart life



iOS

Android

* Download APP Smart Home Connect

- price includes a 1 color/position imprint • set-up charge \$55.00(g) • lead time: 3-5 days after final approval
- for overseas direct orders with lower pricing, please inquire • visit www.tomaxusa.com for more adapter models



ADO07 NEW

Remotely control a device anywhere in the world. A Wi-Fi based smart plug which allows you to, via a mobile phone App, remotely monitor and turn a plugged-in device on/off.

- * Plug-in On/Off Control
- * Works with Amazon Alexa and Google Assistant for voice control
- * Wireless 2.4GHz built-in surge
- * Input/Output: 120V-60Hz Max 15A
- * ETL, FCC certified

Size: H 2 5/8" x W 2 5/8" x D 2"
 Imprint: H 3/4" x W 1 1/4"
 Weight: 100 pcs / 24.65 lbs

12	50	100	250 (4C)
\$26.90	\$24.90	\$22.50	\$20.50



to turn your device on with the sound of your voice

• price includes a 1 color/position imprint • set-up charge \$55.00(g) • lead time: 3-5 days after final approval
 • for overseas direct orders with lower pricing, please inquire • visit www.tomaxusa.com for more adapter models

57W

45W Type C power delivery charging port
+ 12W max USB-A charging port

AD141 **NEW**

Advanced charger of future USB technology. This UL Listed charger consists of a 45W Type C Power Delivery charging port and a 12W max USB-A charging port. Use it to FAST charge iPhone and MacBook at the same time. It is a universal charger that self adjusts its power output to match the unique charging needs of a connected device. PD port provides up to 3A of adaptive output, while the USB port provides up to 2.4A max.

Input: AC 100-240V, 50-60Hz 1.5A Max
 PD Output: 45W (5V/3A, 9V/3A, 12V/3A, 15V/3A, 20V/2.25A)
 USB Output: 12W (5V /2.4A) Max
 Total: 57W

Size: H 2 7/16" x W 2 7/16" x D 1 1/4"
 Imprint: H 2" x W 2"
 Weight: 20 pcs / 15.8 lbs

12	25	100	250 (4C)
\$38.90	\$34.50	\$31.50	\$29.50

* EU/UK/AU international adaptor included,
 package with deluxe box.



what is PD charging?

[power delivery]

It uses USB Type C port and cable to deliver higher level of power to your device.

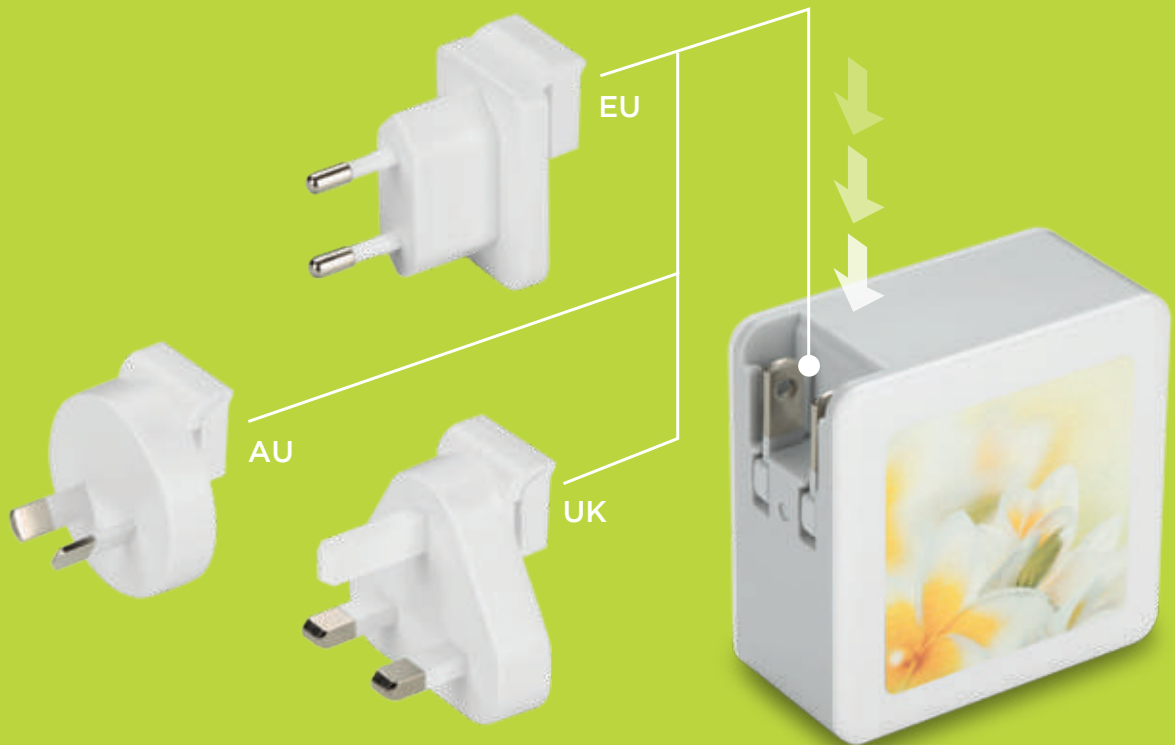


12W USB port

45W Type C PD port

- price includes a 1 color/position imprint • set-up charge \$55.00(g) • lead time: 3-5 days after final approval
- for overseas direct orders with lower pricing, please inquire • visit www.formaxusa.com for more adapter models

supercharge PD adapter with universal plug



AD141



- price includes a 1 color/position imprint • set-up charge \$55.00(g) • lead time: 3-5 days after final approval
- for overseas direct orders with lower pricing, please inquire • visit www.fomaxusa.com for more adapter models

universal adapter



■ AD3622

A must-have for any world-traveler, This truly universal adapter works in over 150 countries! It contains plugs for all types of wall outlets and charges your devices at blazing fast speed.

Input: 100V - 250V ac,
Max: 6A

Dual USB Output: 5V DC/ 1@ 320mA
or 2@ 1600mA

Size: H 3" x W 2" x D 1 7/8"

Imprint: H 5/8" x W 1 1/2"

Weight: 100 pcs / 32.5 lbs

25	100	250	500 (4C)
\$21.90	\$20.50	\$19.50	\$18.90



- price includes a 1 color/position imprint • set-up charge \$55.00(g) • lead time: 3-5 days after final approval
- for overseas direct orders with lower pricing, please inquire • visit www.tomaxusa.com for more adapter models

wall charger
powerbank



5,000 mAh



PC123 **NEW**

ETL Certified 5,000 mAh power bank with dual USB port charger. Foldable plug conveniently use to charge mobile devices and recharge power bank at the same time.

Capacity: 5,000 mAh

Input: AC 100-240V, 50-60Hz

Output: 5V/1A, 5V/2.4A

Size: H 2 7/16" x W 2 7/16" x D 1 1/4"

Imprint: H 2" x W 2"

Weight: 40 pcs / 15.6 lbs

12	50	100	250 (4C)
\$40.90	\$37.90	\$35.90	\$34.90

* optional upgrade with 3 international plug & Deluxe gift box \$5.00 (C)/set, see page 6 AD141



- price includes a 1 color/position imprint • set-up charge \$55.00(g) • lead time: 3-5 days after final approval
- for overseas direct orders with lower pricing, please inquire • visit www.tomaxusa.com for more power bank models



■ AD710

When choosing a charging block, the most important qualification is will it WORK!
Never worry about inconsistency again with this simple and efficient one port, one amp charging block!

Input: 100V-240V

Output: 5V/1A

Size: H 1 3/8" x W 1 3/8" x D 11/16"

Imprint: H 3/4" x W 1"

Weight: 300 pcs / 23 lbs

25	100	250	500 (4C)
\$6.90	\$5.90	\$5.50	\$4.95

■ AD712

Almost everyone now carries at least two devices, help get rid of that huge cluster of wires and charging blocks with this high speed charging block. Two ports and a fold-in prong make this the perfect travel accessory and still looks great in the home.

Input: 100V-240V

Output 1: 5V/1A

Output 2: 5V/2A

Size: H 1 3/4" x W 2 1/2" x D 11/8"

Imprint: H 1" x W 1 1/2"

Weight: 150 pcs / 30 lbs

25	100	250	500 (4C)
\$11.90	\$10.90	\$9.90	\$9.50



- price includes a 1 color/position imprint • set-up charge \$55.00(g) • lead time: 3-5 days after final approval
- for overseas direct orders with lower pricing, please inquire • visit www.tomaxusa.com for more adapter models



AD714

UL Listed 4.8A wall charging adapter with four USB ports. Enjoy the convenience of charging up to 4 devices at once.

Output max: 5V/4.8A, 1 USB port @ 2.4A + 3 USB port @ 1A each

Size: H 3" x W 2 1/4" x D 1 1/8"

Imprint: H 1" x W 1 3/4"

Weight: 100 pcs / 33 lbs

25	100	250	500 (4C)
\$17.90	\$15.90	\$15.50	\$14.90

 check www.tomaxusa.com for product UL certification



AD489

UL listed 4.9A 4 Port USB portable rapid travel charging adapter for all phone and tablets. Smart IC technology intelligently identifies each device (2.4A input Maximum per port) and deliver what it needs for full speed charging.

Input: 12 - 24V

Output total: 5V/ 4.9A

Size: H 2 15/16" x W 2 1/4" x D 1 1/8"

Imprint: H 2" x W 1"

Weight: 100 pcs / 28.5 lbs

25	100	250	500 (4C)
\$17.90	\$15.90	\$15.50	\$14.90





AD342 NEW

UL Listed 3.4 A wall + car charger with dual USB ports. Charge a tablet at maximum speed. Versatile device that allows you to charge whether you're at home, the office or on the go.

Input: DC 12-24V
 Wall: AC 100-240V 50/60HZ
 Output: DC 5V/3.4A max
 Out interface: 2 USB charging port

Size: H 2 11/16" x W 2 7/16" x D 1 1/8"
 Imprint: H 3/4" x W 1 1/2"
 Weight: 100 pcs

25	100	250	500 (4C)
\$17.90	\$15.90	\$15.50	\$14.90

AC893

Three port 2.4A car charger. Add some color in your car.

Size: H 2 1/2" x W 1 3/8" x D 1"
 Imprint: H 3/8" x W 3/4" (laser only)
 Weight: 500 pcs / 29 lbs



100	500	1000	2500 (4C)
\$4.50	\$4.25	\$4.05	\$3.85

• price includes a 1 color/position imprint • set-up charge \$55.00(g) • lead time: 3-5 days after final approval
 • for overseas direct orders with lower pricing, please inquire • visit www.tomaxusa.com for more adapter models



EB380

Stay on the cutting edge of technology with this unique combination USB Car Charger and Bluetooth headset. Enjoy 4 hours of hands free talk time or take them on a run for a lightweight cord free music experience!

Frequency: 2.402 - 2.480GHz
 Standby time: 50 hours
 Talking time: Approx. 4 hours
 Music time: 3.5 hours
 Charging time: 1 hour
 Battery capacity: 40 mAh

Size: H 3 3/4" x W 2 5/8" x D 1 1/8"
 Imprint: H 3/8" x W 1 1/2"
 Weight: 50 pcs / 5.75 lbs

25	100	250	500 (4C)
\$18.90	\$16.90	\$15.90	\$14.90



AC401

Charge up to 3 devices on the go with this 2 port DC adapter with a built-in retractable cable. The cord extends up to 26" and comes with a Micro USB tip.

Output: Micro tip (1.0A) & Each USB port maximum (2.4A), Total output at one time - 4.8A
 Size: H 4" x W 1 3/4" x D 1"
 Imprint: H 1" x W 1"
 Weight: 200 pcs / 29.7 lbs

25	100	250	500 (4C)
\$12.90	\$11.90	\$11.50	\$10.90





break free
with longer cable



Flat Cable

ED569

Charge your Lightning or Micro USB device without feeling tethered to the wall with this 6.5ft flat cable. This new space saving low-profile cable design is perfect around furniture or on the go.

Size: 6.5 FT long (79")

Imprint: H 3/8" x W 1/4"

Weight: 200 pcs / 26.4 lbs

25	100	250	500 (4C)
\$19.90	\$17.90	\$16.90	\$15.90

Made for
 iPod  iPhone  iPad



Round Cable

ED529

Charging cords coming up short? Try this Apple MFi Certified and Micro USB charging cable that measures over 6.5ft!

Size: 6.5 FT long (79")

Imprint: H 3/8" x W 1/4"

Weight: 200 pcs / 26.9 lbs



25	100	250	500 (4C)
\$19.90	\$17.90	\$16.90	\$15.90

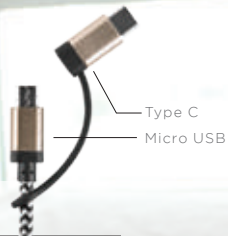
Made for
 iPod  iPhone  iPad



Clear Box \$2.00(C) Blank Goods

Full color imprint available. Please inquire.

- price includes a 1 position laser engraving • set-up charge \$55.00(g) • lead time: 5-7 days after final approval
- for overseas direct orders with lower pricing, please inquire • visit www.tomaxusa.com for more MFi models



ED672

Never be tethered to the wall again with a 10 feet 2-in-1 cable! With Micro USB and USB Type-C connections, you'll be good to go with any device.

Cable length: 10 Feet (120")
 Imprint: H 3/8" x W 1/4"
 Weight: 200 pcs / 37.4 lbs

25	100	250	500 (4C)
\$12.90	\$10.90	\$10.50	\$9.50



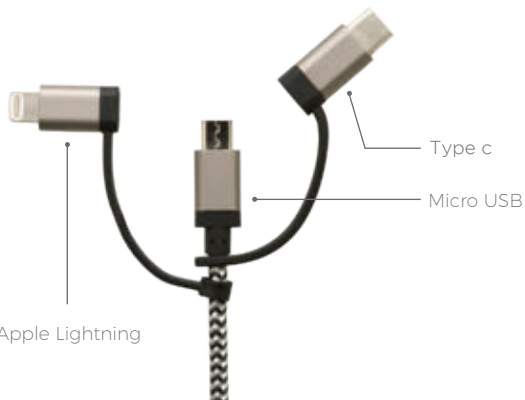
Clear Box \$2.00(C) Blank Goods
 Full color imprint available.
 Please inquire.

ED6572

A 10-foot 3-in-1 cable with Micro USB, Type-C and a removable Apple MFi Certified Lightning connectors. It's the cable that connects to all devices. Never be tethered to the wall again!

Size: 10 Feet Long (120")
 Imprint: H 3/8" x W 1/4" (USB tip)
 Weight: 200 pcs / 36.5 lbs

25	100	250	500 (4C)
\$23.40	\$21.40	\$21.00	\$20.00



MFi Apple Lightning

- price includes a 1 position laser engraving • set-up charge \$55.00(g) • lead time: 3-5 days after final approval
- for overseas direct orders with lower pricing, please inquire • visit www.tomaxusa.com for more MFi models



3-in-1 bendable
silicon charge
& sync cord

ED567 NEW

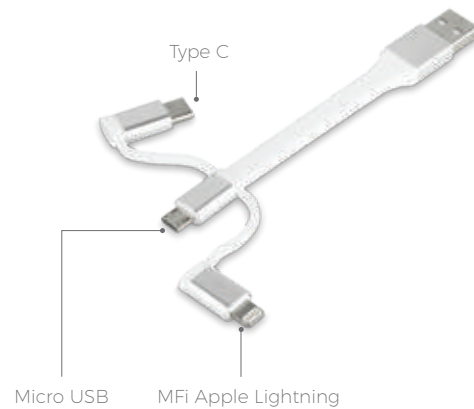
Conveniently used anywhere, easy to carry this 3-in-1 Type C + MFi Apple lightning + Micro USB bendable silicon charge & sync cord.

Size: H 5 3/8" x W 5/8" x D 1/4"

Imprint: H 3/8" x W 1/4"

Weight: 500 pcs / 17.6 lbs

25	100	250	500 (4C)
\$19.90	\$17.90	\$16.90	\$15.90



- price includes a 1 position laser engraving • set-up charge \$55.00(g) • lead time: 3-5 days after final approval
- for overseas direct orders with lower pricing, please inquire • visit www.tomaxusa.com for more MFi models

carabiner charging cable

Choose from your favorite connector type with this new carabiner charging cable. Attach it to your key ring and never be left without your charging cable again.



■ ED581

MFi Apple certified Lightning charge and sync cable with carabiner.

Size: H 4 3/8" x W 7/8" x D 5/8"
(measure with carabiner)

Cable: 4 1/2"

Imprint: H 3/8" x W 1/4"

Weight: 400 pcs / 15.4 lbs

25	100	250	500 (4C)
\$16.50	\$14.90	\$14.50	\$13.90



Made for
 iPod  iPhone  iPad



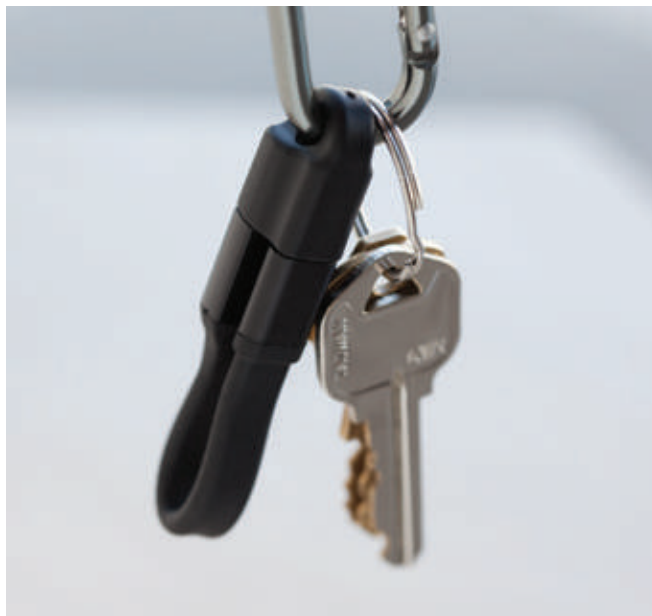
- price includes a 1 position laser engraving • set-up charge \$55.00(g) • lead time: 3-5 days after final approval
- for overseas direct orders with lower pricing, please inquire • visit www.tomaxusa.com for more MFi models



Open



Closed



ED683 NEW

USB 3.0 Type C speed charging and data sync cable with carabiner.

Size: H 4 7/8" x W 7/8" x D 5/8"
(measure with carabiner)

Cable: 5 1/2"

Imprint: H 3/8" x W 1/4"

Weight: 500 pcs / 24.2 lbs

25	100	250	500 (4C)
\$9.90	\$8.90	\$7.90	\$6.90



ED781

Micro USB charge and sync cable with carabiner.

Size: H 4 3/8" x W 7/8" x D 5/8"
(measure with carabiner)

Cable: 4 1/2"

Imprint: H 3/8" x W 1/4"

Weight: 400 pcs / 16.5 lbs

25	100	250	500 (4C)
\$8.50	\$6.90	\$6.50	\$5.90



• price includes a 1 position laser engraving • set-up charge \$55.00(g) • lead time: 3-5 days after final approval
• for overseas direct orders with lower pricing, please inquire • visit www.tomaxusa.com for more cable models

2-in-1 retractable charging cable



ED825 **NEW**

2-in-1 charge & data sync cable in a slide-open compartment, retractable cable extend up to 40 inches.

Size: H 2 1/2" x W 2 1/2" x D 1 1/2"

Imprint: H 1" x W 1"

Weight: 200 pcs/ 25.3 lbs



25	100	250	500 (4C)
\$9.20	\$7.90	\$7.50	\$6.90



* Anti-skid TPE cable

- price includes a 1 color/position imprint • set-up charge \$55.00(g) • lead time: 3-5 days after final approval
- for overseas direct orders with lower pricing, please inquire • visit www.tomaxusa.com for more cable models

ED20 NEW

Retractable 2-in-1 cable with metal tip.

Size: H 2 1/8" x W 2 1/8" x D 1"

Imprint: H 1" x W 1"

Weight: 100 pcs / 15.3 lbs



25	100	250	500 (4C)
\$11.30	\$9.90	\$9.20	\$8.50



• price includes a 1 color/position imprint • set-up charge \$55.00(g) • lead time: 3-5 days after final approval
 • for overseas direct orders with lower pricing, please inquire • visit www.tomaxusa.com for more cable models



ED868 NEW

3-in-1 charging cable. Compatible and portable, you can charge your devices anywhere with this 4 feet long 3-in-1 charging cable.

Size: 4' Long (48")
 Imprint: H 3/16" x W 7/8" (connector)
 H 1/4" x W 3/8" (USB tip)
 Weight: 500 pcs / 39.6 lbs

100	500	1000	2500 (4C)
\$4.85	\$4.35	\$4.10	\$3.95

4 Ft Long

+

3-in-1



- price includes a 1 position laser engraving • set-up charge \$55.00(g) • lead time: 3-5 days after final approval
- for overseas direct orders with lower pricing, please inquire • visit www.tomaxusa.com for more cable models



2-in-1 charging cable

ED831

This metal-encased braided charging cable with Lightning and Micro USB tips bring you top notch durability at a price you're sure to love.

Size: H 5" x W 11/16" x D 5/16"

Imprint: H 5/8" x W 5/16"

Weight: 500 pcs / 19.7 lbs



100	500	1000	2500 (4C)
\$3.30	\$2.90	\$2.70	\$2.59

- price includes a 1 position laser engraving • set-up charge \$55.00(g) • lead time: 3-5 days after final approval
- for overseas direct orders with lower pricing, please inquire • visit www.tomaxusa.com for more cable models

Tired of guessing which way to plug in your cable? With the new reversible cables, it's guaranteed to go in the right way every time.



Reversible



■ **ED702** 

Reversible micro USB & USB charge and data sync cable in clear case.

■ **ED602** 

Reversible type c & usb charge and data sync cable in clear case.

Size: H 2 3/4" x W 2 3/4" x D 7/8" Clear Case

Cable Length: 4 ft

Imprint: H 2" x W 2" (Clear Case)

Weight: 200 pcs / 25 lbs



25	100	250	500 (4C)
\$8.50	\$6.90	\$6.50	\$5.90

■ **ED703**  

Bottle opener with Micro USB charge and data sync cord.

■ **ED583**  

Bottle opener with Lightning charge and data sync cord.

Size: H 1 1/2" x W 3 5/8" x D 3/8"

Imprint: H 5/8" x W 1"

Weight: 200 pcs / 20.24 lbs

ED703	25	100	250	500 (4C)
	\$8.50	\$6.90	\$6.50	\$5.90
ED583	25	100	250	500 (4C)
	\$16.50	\$14.90	\$14.50	\$13.90

• price includes a 1 color/position imprint • set-up charge \$55.00(g) • lead time: 3-5 days after final approval
 • for overseas direct orders with lower pricing, please inquire • visit www.tomaxusa.com for more cable models



why is our foldable wireless mouse better?

We use only the best components in our MS1829 to ensure it meets our highest standards. Ergonomic design provides comfortable use. Ingenious foldable design converts it into a compact size that is perfect for travel. Strong metal shaft is used for the folding mechanism. ABS plastic material. 2.4GHz, 2 way transmission technology with an operating range up to 30 feet. Top IC chip (A3000) & RF solutions (A4302) within the wireless industry - a true 2-in-1 chip with an optical tracking DPI switch & indicator

that adjusts the speed (1000/1500/2000) for accuracy. Extra strong infrared sensor that passes through any rough surface. Plug and play nano receiver fits into the body of the mouse. Windows PC and Mac compatible. 2 AAA alkaline batteries (included). Battery status indicator. Low battery consumption with both manual and auto shut down feature to conserve battery life.

■ MS1829

Full size foldable wireless mouse optical mouse. Ergonomic design that's convenient to bring wherever you go.

Size: H 4 1/2" x W 2 1/4" x D 1 1/4"

Imprint: H 5/8" x W 1 3/8"

Weight: 100 pcs / 24 lbs



12	50	100	250 (4C)
\$15.90	\$13.90	\$13.50	\$12.95



Our most popular wireless travel mouse now available in orange!

■ MS1827

Wireless gaming mouse. ABS material with an ergonomic design. Up to 10 feet working range.

- * Frame 30 ips/sec,
- * Acceleration 150320g
- * Resolution : 800/1200/1600/2000/2400 CPI

Size: H 5" x W 2 7/8" x D 1 1/2"

Imprint: H 5/8" x W 7/8"

Weight: 100 pcs / 23.5 lbs

12	50	100	250 (4C)
\$17.90	\$15.90	\$15.50	\$14.95



■ MS1819

Wireless optical mouse. Ergonomic smart design with a plug and play nano receiver.

- * Wireless 2.4G radio wave (range up to 30 feet)
- * Plug & play nano receiver (easy to use)
- * Auto sleep feature (energy saving)
- * PC & MAC compatible
- * AA battery included
- * 3 CPI 1000/1500/2000 conversion (default at 10 00)
- * Unit works on most desk surface except glass

Size: H 4 1/2" x W 2 7/8" x D 1 1/2"

Imprint: H 1/2" x W 1"

Weight: 100 pcs / 24.2 lbs

12	50	100	250 (4C)
\$11.90	\$10.50	\$9.90	\$9.50



Welcome to the wireless world!

what's qi wireless charging?

Qi is an open interface standard that defines wireless power transfer using inductive charging.



product display: **QC104**
for more product detail, please see page 28.



QC104 NEW

Ultra-slim UFO Shape crystal wireless charging transmitter with LED light, wirelessly charge your compatible iPhone or Galaxy smartphones, and other Qi-compatible devices.

Input: 5V/2A
 Output: 5V/1A
 Charging distance: 4-8 mm

Size: Dia 3 15/16" x D 7/16"
 Imprint: H 1/2" x W 1 1/4"
 Weight: 100 pcs / 19.8 lbs

25	100	250	500 (4C)
\$8.90	\$7.50	\$6.90	\$6.50



QC107 NEW

Lightweight portable wireless charging pad, works with new iPhones, new Galaxy phones and Qi enabled devices..

Input: 5V/1A
 Output: 5V up to 900mAh
 Charging distance: 4-8 mm

Size: Dia 2.6"
 Imprint: Dia 2"
 Weight: 100 pcs / 18.8 lbs



25	100	250	500 (4C)
\$5.29	\$4.89	\$4.59	\$4.29



wireless charging



- price includes a 1 color/position imprint • set-up charge \$55.00(g) • lead time: 3-5 days after final approval
- for overseas direct orders with lower pricing, please inquire • visit www.tomaxusa.com for more qi charger models



Lightning Micro Type C

QC201 NEW

Input: 5V/ 1.5A
 3 input ports: Micro/Lightning/Type C
 Output: 5V/ 1A

Size: H 3 1/16" x W 3 1/16" x D 5/16"
 Imprint: H 3/4" x W 1 1/2"
 Weight: 100 pcs / 19.4 lbs

25	100	250	500 (4C)
\$14.90	\$12.90	\$11.50	\$9.90



*Ultra-thin versatile wireless charging pad
 *intelligent charging IC
 *Provides convenient charge up for your new iPhone8/8 plus/X and other Android Qi enabled devices (charge your device without a charging cable)
 *3 charging input ports to power up this device - Type C, Lightning & Micro (cable included).

Capacity: 2,000 mAh
 Input: 5V/1.5A (60" Micro USB charging cord included)
 Output: 5V/1A (12" Micro USB output cord to charge Android phone, or attach an optional Micro to Lightning tip to charge iPhone)



Black Deluxe box included

PC2603 US Patent Pending

UFO style QI wireless charger. Charge any QI charging compatible device from your home base, or take it with you for a 2,000 mAh wireless power bank. Be on the cutting edge of technology.

Size: Dia. 3 5/8" x H 2"
 Imprint: Dia. 2"
 Weight: 20 pcs / 24.2 lbs

12	50	100	250 (4C)
\$33.90	\$30.90	\$29.90	\$28.90



ED598

MFi certified Apple 8 pin lightning add-on tip.

\$8.00(C) blank goods

For detail, visit www.tomaxusa.com



Qi wireless charging for Android and iPhone 8/ 8 Plus/ X users



60" Micro USB cable included to charge the unit



Add optional add-on tip for Apple users

wireless
charging



2,000mAh



10,000 mAh



■ QC100 **NEW**

Wireless charger with digital display power indicator, a dual port power bank and wireless charging pad.

Capacity: 10,000 mAh
 Input: Micro USB 5V/2 A
 USB Total Output: 5V/2A
 Wireless output: 5W

Size: H 6" x W 3" x D 11/16"
 Imprint: H 1 x W 1 1/2"
 Weight: 50 pcs / 28.6 lbs

12	50	100	250 (4C)
\$36.90	\$33.90	\$31.90	\$30.90



- price includes a 1 color/position imprint • set-up charge \$55.00(g) • lead time: 3-5 days after final approval
- for overseas direct orders with lower pricing, please inquire • visit www.tomaxusa.com for more qi charger / power bank models



wireless
charging

10,000 mAh

QC602 NEW

2 in 1 Dual USB port external battery charger with LED flashlight, wireless charger with power bank.

Capacity: 10,000mAh
 Input: 5V/2A
 USB total output: 5V/2A
 Wireless output: 5W

Size: H 5 7/8" x W 2 13/16" x D 7/16"
 Imprint: H 1 x W 1 1/2"
 Weight: 30 pcs / 18.7 lbs



Dual USB Port

LED Flashlight

12	50	100	250 (4C)
\$33.90	\$30.90	\$28.90	\$26.90



- price includes a 1 color/position imprint • set-up charge \$55.00(g) • lead time: 3-5 days after final approval
- for overseas direct orders with lower pricing, please inquire • visit www.tomaxusa.com for more qi charger / power bank models



8,000 mAh

QC5110 NEW US Patent Pending

Soft rubberized and easy grip material power bank with wireless charger.

Capacity: 8,000 mAh
 Input: Micro USB 5V/2 A
 Type C 5V/2 A
 USB Output: 5V/1A & 5V/2A
 Wireless Output: 5W

Size: H 5 3/4" x W 2 15/16" x D 9/16"
 Imprint: H 1" x W 1 1/2"
 Weight: 30 pcs/ 17.6 lbs

12	50	100	250 (4C)
\$35.90	\$32.90	\$30.90	\$28.90



**Optional Upgrade Packaging P15 / B32.*

UL battery



Micro USB

Type C

Indicator

- price includes a 1 color/position imprint • set-up charge \$55.00(g) • lead time: 3-5 days after final approval
- for overseas direct orders with lower pricing, please inquire • visit www.tomaxusa.com for more qi charger / power bank models



6,000 mAh

charge with style

these small metallic power banks
easily slip into pockets or purses
for portable power on the go.



■ PC5680 *US Patent Pending*

The disc shape and tech-friendly color palette make this a great choice at a great price.

Capacity: 6,000 mAh
Input: Micro USB 5V/ 2A
Output: 5V/2.4A

Size: Dia. 3 7/16" x H 5/8"
Imprint: H 2" x W 2"
Weight: 50 pcs / 20.5 lbs



12	50	100	250 (4C)
\$29.90	\$27.50	\$25.90	\$24.90

**Optional Upgrade Packaging P56 / B24.*

UL battery

• price includes a 1 color/position imprint • set-up charge \$55.00(g) • lead time: 3-5 days after final approval
• for overseas direct orders with lower pricing, please inquire • visit www.tomaxusa.com for more power bank models



PC5110hb

PC5056hb

PC5110hb **NEW** US Patent Pending

10000 mAh heartbeat/breathing power bank.

Capacity: 10,000 mAh
 Input: 5V/ 1A
 Output: 5V/ 1A, 5V/ 2A

Size: H 5 3/4" x W 2 15/16" x D 9/16"
 Engraving: H 1 7/8" x W 2 7/8" (Max)
 Weight: 30 pcs/ 17.6 lbs

12	50	100	250 (4C)
\$33.90	\$30.90	\$28.90	\$26.90

*Optional Upgrade Packaging P15 / B32.

UL battery

PC5056hb US Patent Pending

Capacity: 5,000 mAh
 Input: 5V/ 2A
 Output: 5V/ 1A, 5V/ 2A

Size: H 4 7/8" x W 2 3/4" x D 7/16"
 Engraving: H 3/4" x W 1 1/2" (Max)
 Weight: 50 pcs / 16.8 lbs

25	100	250	500 (4C)
\$20.50	\$18.50	\$16.90	\$15.90

*Optional Upgrade Packaging P56 / B24.



heartbeat/ breathing power bank

A power bank with "heartbeat" and "breathing" feature.

With each beat, it brings life to your smartphone or device.

It also highlights your corporate logo when breathing.

www.tomaxusa.com/pc5056hb

5,000 mAh

10,000 mAh



Highlights logo when breathing

• price includes a 1 position laser engraving • set-up charge \$55.00(g) • lead time: 3-5 days after final approval
• for overseas direct orders with lower pricing, please inquire • visit www.tomaxusa.com for more power bank models

■ PC5056

Pocket size power bank with rubberized finish. 5000 mAh of power size as your wallet.



Capacity: 5,000 mAh
 Input: 5V/2A
 Output: 5V/1A, 5V/2A

Size: H 4 7/8" x W 2 3/4" x D 7/16"
 Imprint: H 1 1/2" x W 1 1/2"
 Weight: 50 pcs / 16.8 lbs



25	100	250	500 (4C)
\$17.90	\$15.90	\$14.90	\$13.90

**Optional Upgrade Packaging P56 / B24.*

■ PC5110

Soft rubberized and easy grip material. Smart LED indicator shows battery level or charging status, one button to display the battery capacity or push for 1W LED light.

Capacity: 10,000 mAh
 Input: 5V/ 2A
 Output: 5V/ 1A, 5V/ 2A

Size: H 5 3/4" x W 2 15/16" x D 9/16"
 Imprint: H 3" x W 1 1/2"
 Weight: 30 pcs / 17.6 lbs



12	50	100	250 (4C)
\$25.50	\$22.50	\$21.50	\$20.50

**Optional Upgrade Packaging P15 / B32.*

UL battery

■ PC5200

With the industry leading Li-Polymer battery and a massive 20000 mAh capacity, you'll never be left with dead devices again. Lightning, Micro-USB, or USB-Type C inputs make this the most universal power bank yet. While three output ports offers the flexibility to charge up to three devices at once. The soft, rubberized feel is sure to make it a new favorite.

Capacity: 20,000 mAh
 Input: Micro USB 5V/ 2A,
 Type C 5V/2A,
Lightning 5V/1.5A
 Output: 5V/2A & 5V/2A & 5V/1A

Size: H 7 3/4" x W 3 3/4" x D 9/16"
 Imprint: H 4" x W 2"
 Weight: 20 pcs / 21.6 lbs



12	50	100	250 (4C)
\$53.90	\$49.90	\$46.90	\$43.90

**Optional Upgrade Packaging P85.*

UL battery

- price includes a 1 color/position imprint • set-up charge \$55.00(g) • lead time: 3-5 days after final approval
- for overseas direct orders with lower pricing, please inquire • visit www.tomaxusa.com for more power bank models

5,000 mAh

10,000 mAh

20,000 mAh



US Patent Pending

• price includes a 1 color/position imprint • set-up charge \$55.00(g) • lead time: 3-5 days after final approval
 • for overseas direct orders with lower pricing, please inquire • visit www.tomaxusa.com for more power bank models

advanced technology

- High-end fast charge in/out Type C port
- Dual USB output ports



Shake to power up
power bank



■ PC608 **NEW**

capacity: 10,000 mAh
 Input: 5V/ 2.1A Max (Micro USB)
 5V/ 3A Max (Type C)
 Output: 5V/ 3A Max (Type C)
 USB total output: 5V/ 3A Max

Size: H 5 3/4" x W 2 7/8" x D 1/2"
 Imprint: H 2" x W 1 1/2"
 Weight: 30 pcs / 17.6 lbs



12	50	100	250 (4C)
\$33.90	\$31.90	\$29.90	\$28.90

10,000 mAh

20,000 mAh

handheld size
high capacity
power bank



PC8203 NEW

Fast charge high capacity Type C input/output with dual output USB ports. Intelligently charges any latest version smartphone and **MacBook**.

Capacity: 20,000 mAh
Input: 5V / 2A (Micro USB)
5V / 2.6A (Type C)
Output: USB 1: 5V / 2.4A
USB 2: 5V/3.0A (intelligent charging);
Type C output: 5V / 3.0A

Size: H 5 3/8" x W 2 5/8" x D 1"
Imprint: H 2 1/2" x W 1 1/2"
Weight: 20 pcs / 19.4 lbs

12	50	100	250 (4C)
\$53.90	\$49.90	\$47.90	\$45.90

UL battery



Type C
Micro USB

• price includes a 1 color/position imprint • set-up charge \$55.00(g) • lead time: 3-5 days after final approval
• for overseas direct orders with lower pricing, please inquire • visit www.tomaxusa.com for more power bank models

stylish **metal** contemporary **two-tone** design

Modern two-tone metallic finish power bank in 5000 & 10000 mAh versions with both lightning and micro input ports. Keep this fashionable sleek power bank with you at all times so you never have a dead device again.



Lightning input ——— Micro USB input

■ **PC8019** US Patent Pending

Capacity: 10,000 mAh
 Input: Micro USB 5V/2A
 Lightning 5V/1.5A
 Output: 5V/2A
 Size: H 5 5/16" x W 2 3/4" x D 9/16"
 Imprint: H 2 1/2" x W 1 1/2"
 Weight: 30 pcs / 19.6 lbs

12	50	100	250 (4C)
\$30.90	\$28.90	\$27.50	\$25.90

*Optional Upgrade Packaging P15 / B32.



■ **PC8520** US Patent Pending

Capacity: 5,000 mAh
 Input: Micro USB 5V/2A
 Lightning 5V/1.5A
 Output: 5V/2A
 Size: H 4 7/8" x W 2 11/16" x D 3/8"
 Imprint: H 2 1/2" x W 1 1/2"
 Weight: 50 pcs / 19.6 lbs

25	100	250	500 (4C)
\$21.90	\$19.90	\$18.90	\$17.90

*Optional Upgrade Packaging P56 / B24.



- price includes a 1 color/position imprint • set-up charge \$55.00(g) • lead time: 3-5 days after final approval
- for overseas direct orders with lower pricing, please inquire • visit www.tomaxusa.com for more power bank models



5,000 mAh

10,000 mAh

• price includes a 1 color/position imprint • set-up charge \$55.00(g) • lead time: 5-7 days after final approval
• for overseas direct orders with lower pricing, please inquire • visit www.tomaxusa.com for more power bank models



4,000 mAh

■ PC6016

A fresh retro 4000 mAh power bank with a metallic finish. The beautiful black power bank is sure to be a hit with all age groups!

Input: 5V/ 1A

Output: 5V/ 1A

Size: H 4 5/16" x W 2 5/8" x D 3/8"

Imprint: H 2" x W 1 1/2"

Weight: 50 pcs / 17.4 lbs



25	100	250	500 (4C)
\$14.90	\$12.90	\$11.50	\$9.90

**Optional Upgrade Packaging P56.*

UL battery



stylish metal powerbook

For the person on the go who only wants to carry one cord, this unique 10000 mAh power bank can be charged with either micro USB and Lightning tips. Go ahead and leave all the extra cords behind, this one's got you covered!

- price includes a 1 color/position imprint • set-up charge \$55.00(g) • lead time: 3-5 days after final approval
- for overseas direct orders with lower pricing, please inquire • visit www.tomaxusa.com for more power bank models



10,000 mAh

Micro Input

Lightning Input

■ PC5115 US Patent Pending

Capacity: 10,000 mAh

Input: Micro USB 5V/2A

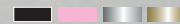
Lightning 5V/1.5A

Output: 5V/1A & 5V/2A

Size: H 5 7/16" x W 2 13/16" x D 1/2"

Imprint: H 2 1/2" x W 1 1/2"

Weight: 30 pcs / 19.6 lbs



12	50	100	250 (4C)
\$33.90	\$31.90	\$30.90	\$29.90

*Optional Upgrade Packaging P15 / B32.



- price includes a 1 color/position imprint • set-up charge \$55.00(g) • lead time: 3-5 days after final approval
- for overseas direct orders with lower pricing, please inquire • visit www.tomaxusa.com for more power bank models

6,000 mAh

15,000 mAh



■ PC2816

Our popular wavy style power bank is now available in 6000 mAh capacity. Keep your devices charged in style with this affordable new size.

Input: 5V/1A

Output: 5V/1A, 5V/2.1A

Size: H 4 15/16" x W 2 7/8" x D 1/2"

Imprint: H 2" x W 2"

Weight: 40 pcs / 20.25 lbs



25	100	250	500 (4C)
\$23.90	\$21.90	\$20.90	\$19.90

■ PC2815

15000 mAh high capacity power bank with a beautiful wavy finish. Built-in LCD indicator shows remaining battery level. Patented design.

Input: 5V/2A

Output: 5V/1A, 5V/2.1A

Size: H 7" x W 3 15/16" x D 7/16"

Imprint: H 3" x W 2"

Weight: 20 pcs / 18.6 lbs



12	50	100	250 (4C)
\$41.50	\$38.50	\$37.50	\$35.90

**Optional Upgrade Packaging P85.*



- price includes a 1 color/position imprint • set-up charge \$55.00(g) • lead time: 3-5 days after final approval
- for overseas direct orders with lower pricing, please inquire • visit www.tomaxusa.com for more power bank models

wall charger
powerbank



5,000 mAh



PC123 **NEW**

ETL Certified 5,000 mAh power bank with dual USB port charger. Foldable plug conveniently use to charge mobile devices and recharge power bank at the same time.

Capacity: 5,000 mAh

Input: AC 100-240V, 50-60Hz

Output: 5V/1A, 5V/2.4A

Size: H 2 7/16" x W 2 7/16" x D 1 1/4"

Imprint: H 2" x W 2"

Weight: 40 pcs / 15.6 lbs

12	50	100	250 (4C)
\$40.90	\$37.90	\$35.90	\$34.90

* optional upgrade with 3 international plug & Deluxe gift box \$5.00 (C)/set, see page 6 AD141



- price includes a 1 color/position imprint • set-up charge \$55.00(g) • lead time: 3-5 days after final approval
- for overseas direct orders with lower pricing, please inquire • visit www.tomaxusa.com for more power bank models

razor thin
power bank

5,000 mAh



■ PC6350

Razor thin 5000 mAh power bank with a rubberized finish for a unique combination of both a sleek futuristic design and a more comfortable to hold rubbery finish.

Capacity: 5000 mAh

Input: 5V/2A

Output: Max 5V/2.1A

Size: H 5 7/8" x W 2 5/8" x D 3/8"

Imprint: H 1 1/2" x W 3 1/2"

Weight: 50 pcs / 16.85 lbs

25	100	250	500 (4C)
----	-----	-----	----------

\$19.90	\$18.90	\$17.90	\$16.90
----------------	----------------	----------------	----------------

**Optional Upgrade Packaging P15.*



- price includes a 1 color/position imprint • set-up charge \$55.00(g) • lead time: 3-5 days after final approval
- for overseas direct orders with lower pricing, please inquire • visit www.tomaxusa.com for more power bank models



■ PC3589

5,000 mAh dual port power bank with a faux leather textured design. Charges up to 2 devices at once and can charge a tablet at maximum speed. Versatile power bank at an affordable price.

Input: 5V/1A
Output: 5V/1A & 5V/2A

Size: H 4 1/8" x W 2 3/4" x D 1/2"

Imprint: H 1 1/2" x W 1 1/2"

Weight: 50 pcs / 17.6 lbs



25	100	250	500 (4C)
\$16.90	\$14.90	\$13.90	\$12.90

**Optional Upgrade Packaging P56 / B24.*

UL battery



- price includes a 1 color/position imprint • set-up charge \$55.00(g) • lead time: 3-5 days after final approval
- for overseas direct orders with lower pricing, please inquire • visit www.tomaxusa.com for more power bank models



2,500mAh

detachable
micro USB
cable



■ PC5208

2,500 mAh power bank with a faux leather textured design. Comes with a built-in micro USB cable.

Input: 5V/1A

Output: 5V/1A

Size: H 3 13/16" x W 2 1/2" x D 1/4"

Imprint: H 2" x W 2"

Weight: 100 pcs / 18.7 lbs

25 | 100 | 250 | 500 (4C)

\$12.90 | **\$10.90** | **\$9.90** | **\$8.95**

**Optional Upgrade Packaging P56.*

UL battery

- price includes a 1 color/position imprint • set-up charge \$55.00(g) • lead time: 3-5 days after final approval
- for overseas direct orders with lower pricing, please inquire • visit www.tomaxusa.com for more power bank models



1. Slim Faux leather textured design
2. Pull out charging cables
3. USB output port
4. LED power indicators



PC5519 NEW

5,000 mAh slim Faux leather textured power bank with pull out charging cables and LED power indicators.

Input: 5V/1A Micro USB

Output: 5V/1A Micro, 5V/1A USB, 5V/1A lightning

Size: H 5 5/16" x W 2 5/8" x D 3/8"

Imprint: H 2" x W 2"

Weight: 50 pcs / 16.75 lbs

25	100	250	500 (4C)
\$18.90	\$16.90	\$15.90	\$14.90

UL battery

- price includes a 1 color/position imprint • set-up charge \$55.00(g) • lead time: 3-5 days after final approval
- for overseas direct orders with lower pricing, please inquire • visit www.tomaxusa.com for more power bank models



■ PC2806 Patented Design

2,200 mAh tubular power bank with a keychain hook. UL recognized battery. Patented design.

Input: 5V/1A

Output: 5V/1A

Size: H 4 1/4" x W 7/8" x D 7/8"

Imprint: H 3/8" x W 2"

Weight: 50 pcs / 11.8 lbs



25	100	250	500 (4C)
\$12.90	\$10.90	\$9.90	\$8.90

UL battery



■ PC9705-UL

UL certified 2,200 mAh metal power bank. The perfect affordable gift for your next event.

Input: 5V/1A

Output: 5V/1A

Size: H 3 3/4" x W 13/16" x D 13/16"

Imprint: H 1/2" x W 2"

Weight: 100 pcs / 23.1 lbs



25	100	250	500 (4C)
\$11.90	\$9.90	\$8.90	\$7.90



- price includes a 1 color/position imprint • set-up charge \$55.00(g) • lead time: 3-5 days after final approval
- for overseas direct orders with lower pricing, please inquire • visit www.tomaxusa.com for more power bank models

Keyring power bank charging cable w / flashlight

1,500mAh



■ PC7101 US Patent Pending

Ultra-portable Emergency powerbank - 1500 mAh that you keep on your keyring, with an attached pull-out Micro USB or iPhone charging cable, you'll have power and charging cable in your pocket everywhere you go.

Capacity: 1,500 mAh

Input: 5V/ 1A

Output: 5V/ 1A

Size: H 3 1/2" x W 1 9/16" x D 1/2"

Imprint: H 1" x W 1 3/4"

Weight: 100 pcs / 18.7 lbs



25	100	250	500 (4C)
\$14.90	\$12.90	\$12.50	\$11.90



• price includes a 1 color/position imprint • set-up charge \$55.00(g) • lead time: 3-5 days after final approval
• for overseas direct orders with lower pricing, please inquire • visit www.tomaxusa.com for more power bank models



■ PC9508

10,000 mAh power bank with 3 USB ports.
Powerfully charges 3 devices at one time.

Input: 5V/1A

Output: 5V/1A, 5V/1A & 5V/2A

Size: H 5 9/16" x W 2 1/2" x D 15/16"

Imprint: H 1" x W 3"

Weight: 30 pcs / 21.6 lbs

25	100	250	500 (4C)
\$24.90	\$22.90	\$21.50	\$19.90

**Optional Upgrade Packaging P15, B32.*

UL battery



- price includes a 1 color/position imprint • set-up charge \$55.00(g) • lead time: 3-5 days after final approval
- for overseas direct orders with lower pricing, please inquire • visit www.tomaxusa.com for more power bank models

2,600mAh

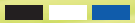


PC2801

2,600 mAh super slim square power bank. Modern look that's easy to take wherever you go.

Input: 5V/1A
Output: 5V/1A

Size: H 3 1/16" x W 3 1/16" x D 5/16"
Imprint: H 2" x W 2"
Weight: 100 pcs / 19.40 lbs



25	100	250	500 (4C)
\$10.90	\$9.90	\$9.90	\$8.90

**Optional Upgrade Packaging P56.*

UL battery

• price includes a 1 color/position imprint • set-up charge \$55.00(g) • lead time: 3-5 days after final approval
 • for overseas direct orders with lower pricing, please inquire • visit www.tomaxusa.com for more power bank models



■ PC6803

The future of portable sound is here. This truly wireless bluetooth earbud comes docked in a 6,600 mAh power bank which charges it and can be used to charge your devices.

Capacity: 6,600 mAh

Input: 5V/ 1.5A

Output: 5V/ 2.1 A

Size: H 2 5/8" x W 3 15/16" x D 7/8"

Imprint: H 1 1/4" x W 2"

Weight: 40 pcs / 19.25 lbs

12	50	100	250 (4C)
\$33.90	\$30.90	\$29.50	\$27.90

**Optional Upgrade Packaging P56.*

bluetooth
earbud +
power bank

1. LED Light Display
2. Bluetooth V 4.0
3. Wireless range: 33 ft/10 meters
4. Standby time: 160 hours
5. Talking time: 2 ~3 hours

- price includes a 1 color/position imprint • set-up charge \$55.00(g) • lead time: 3-5 days after final approval
- for overseas direct orders with lower pricing, please inquire • visit www.tomaxusa.com for more power bank models



6,600 mAh

• price includes a 1 color/position imprint • set-up charge \$55.00(g) • lead time: 3-5 days after final approval
• for overseas direct orders with lower pricing, please inquire • visit www.tomaxusa.com for more power bank models

3-in-1

power bank + dual bluetooth speakers + cellphone holder

1. Exquisite brand name design
2. Bluetooth V4.0
3. Capacity: 5200 mAh
4. Input: 5V/1A
5. Output: 5V/1.5A (Max)
6. LED Indicator
7. Playtime: 6-7 hours
8. Standby time: 300 hours
9. Wireless range: 33 ft/10 meters
10. Speaker: 3W x 2

5,200mAh



PR6801 Patented Design

Get the best of both worlds with this Bluetooth Speaker and Power bank combo. 5200 mAh means your phone will stay charged the entire time you're enjoying the booming bass-filled sound!

Size: H 1 1/2" x W 4 3/4" x D 1"
 Imprint: H 3/4" x W 2"
 Weight: 40 pcs / 26 lbs

12	50	100	250 (4C)
\$54.90	\$51.90	\$48.50	\$46.90

*Optional Upgrade Packaging P15.



- price includes a 1 color/position imprint • set-up charge \$55.00(g) • lead time: 3-5 days after final approval
- for overseas direct orders with lower pricing, please inquire • visit www.fomaxusa.com for more power bank models



music

genuine **leather headband**
with metal compact design



premium
sound quality
with **aptX[®] audio**

1. Bluetooth version: 4.1
2. Talk time/Music playtime: 23/21 hours
3. Stand-by time: 850 hours
4. Battery capacity: 420 mAh
5. Charging time 2-3 hours
6. Rated power: 20 mW
7. Impedance: 64 Ω
8. Sound pressure level: 100 \pm 3 dB
9. Wireless range: 33 ft/10 meters
10. Hands free





HB108 NEW

- * aptX® audio technology, connect wirelessly to any apt-x enabled devices, vastly improving the quality of bluetooth streaming and delivering CD-quality sound
- * Hand free talking with balance sound performance
- * 3.5mm music line-in function
- * Support connecting with 2 phone devices
- * Headphone battery power status showed on iOS

Size: H 7 1/2" x W 6 1/2" x D 3"
 Imprint: H 1" x W 1"
 Weight: 10 pcs / 17.65 lbs

12	50	100	250 (4C)
\$108.90	\$104.90	\$101.90	\$99.90

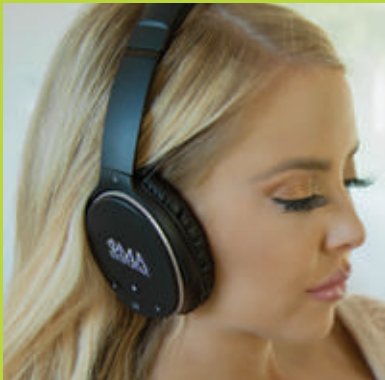
**Deluxe gift box included.*



• price includes a 1 position laser engraving • set-up charge \$55.00(g) • lead time: 3-5 days after final approval
 • for overseas direct orders with lower pricing, please inquire • visit www.tomaxusa.com for more bluetooth products

ANC active noise cancellation bluetooth headphone

1. Bluetooth version: 4.0
2. Talk time/Music playtime: 10/10 hours
3. Battery capacity: 360 mAh
Charging time 2.5 hours
4. Rated power: 10 mW
5. Impedance: 32Ω
6. Sensitivity : 42±3dB
7. Wireless range: 33 ft/10 meters
8. Hands free



- * Active Noise Cancellation - aimed to cancel out lower-pitched noise, removes distracting surrounding noises, listen to your music at a lower (and safer) volume, just by pressing to turn on the ANC mode
- * Foldable design to make unit more convenient when travel or to use outdoors, packaged with travel pouch.
- * Adjustable and curved fit headband design, 90 degree swiveling earcups give you more comfort and durability.
- * Wireless or Wired connection - Stable Bluetooth connection or AUX port with 3.5 mm jack cable



ANC Button



Adjustable & Curved Fit Headband Design



Foldable Design

HB701 NEW

Size: H 8" x W 5 1/2" x D 3"
 Imprint: H 1" x W 1"
 Weight: 20 pcs / 24.2 lbs

12	50	100	250 (4C)
\$79.90	\$75.90	\$72.90	\$69.90

**Deluxe gift box and EVA pouch included.*



* price includes a 1 color/position imprint • set-up charge \$55.00(g) • lead time: 3-5 days after final approval
 • for overseas direct orders with lower pricing, please inquire • visit www.tomaxusa.com for more bluetooth products



ergonomic comfortable design

with a truly wireless experience

1. Wireless Version: 4.2
2. Wireless range: 33FT/ 10M
3. Battery: 55 mAh each earbud, 450 mAh charging box
4. Talk time: 2 hours
5. Charging time: 1-2 hours for the earphone, 3-4 hours for the charging base
6. Built-in superior HD microphone



Deluxe gift box included

EB948

No Audio jack? No problem! These Bluetooth Wireless Earbuds offer an affordable and truly wireless solution. Presented in a convenient, ultra-portable charging base.

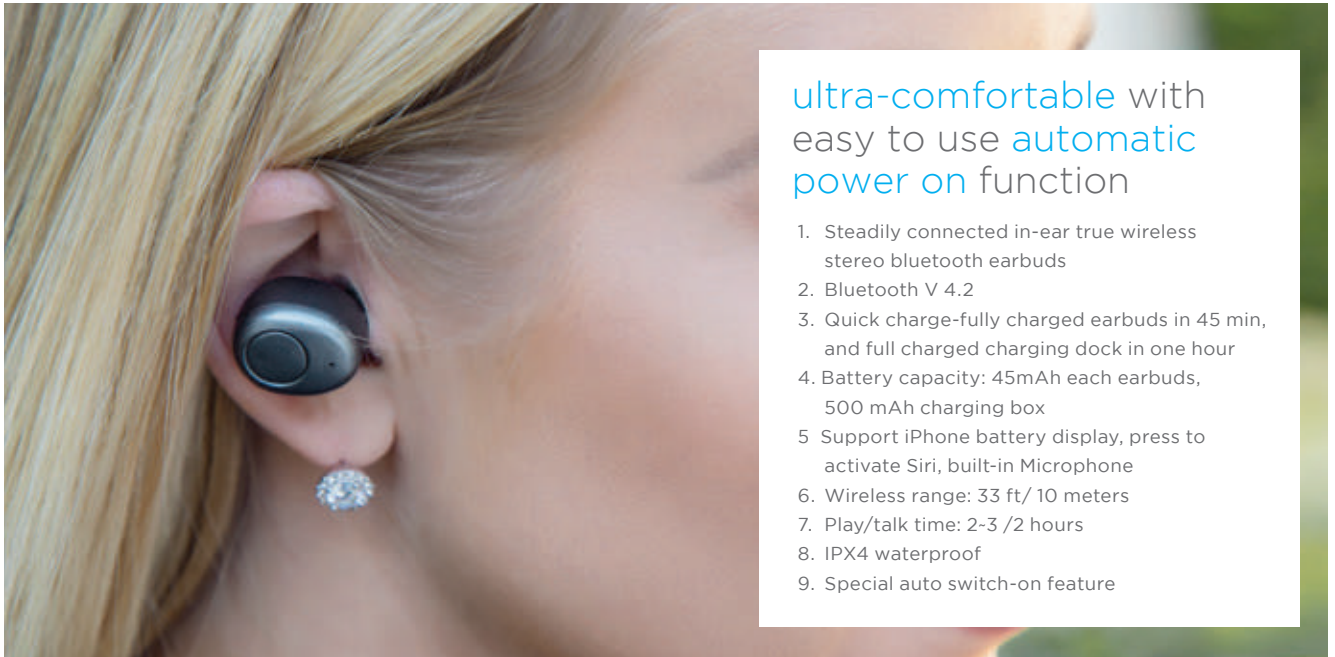
Size (Single Ear): H 1" x W 7/8" x D 5/8"

Size (Case): H 1 7/16" x W 3 1/4" x D 1 1/4"

Imprint (On Case): H 1/2" x W 2"

Weight: 50 pcs / 18.7 lbs

12	50	100	250 (4C)
\$54.90	\$49.90	\$46.90	\$44.90



ultra-comfortable with
easy to use automatic
power on function

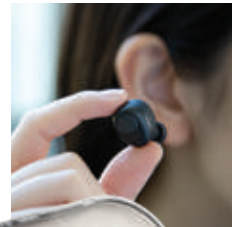
1. Steadily connected in-ear true wireless stereo bluetooth earbuds
2. Bluetooth V 4.2
3. Quick charge-fully charged earbuds in 45 min, and full charged charging dock in one hour
4. Battery capacity: 45mAh each earbuds, 500 mAh charging box
5. Support iPhone battery display, press to activate Siri, built-in Microphone
6. Wireless range: 33 ft/ 10 meters
7. Play/talk time: 2-3 /2 hours
8. IPX4 waterproof
9. Special auto switch-on feature

■ EB1601

Be on the cutting edge. Top of the Line sweat-proof wireless stereo earbuds presented in a sleek charging case. A great way to associate your brand with innovation by using the latest and greatest technology. These earbuds certainly fit the bill!

Size (Single Ear): H 1" x W 3/4" x D 5/8"
 Size (Case): H 1 1/4" x W 2 7/8" x D 1 1/4"
 Imprint (On Case): H 1 1/2" x W 1 1/2"
 Weight: 30 pcs / 8.8 lbs

12	50	100	250 (4C)
\$66.90	\$63.90	\$61.90	\$59.90



Deluxe gift box included



• price includes a 1 color/position imprint • set-up charge \$55.00(g) • lead time: 3-5 days after final approval
 • for overseas direct orders with lower pricing, please inquire • visit www.tomaxusa.com for more bluetooth products



1. Bluetooth V4.2
2. Speaker: 3 W
3. Battery: rechargeable li-ion 400 mAh
4. Music play time up to 2.5 hours
5. Wireless range: 33ft/10 meters
6. Hands free
7. Noise reduction and echo cancellation
8. Multi-band configurable equalizer
9. TF card slot

RS820 NEW

Delicate appearance with powerful sound, slim to be carried portable, yet a nice desktop speaker.

Size: H 2 3/4" x W 3 5/8" x D 1 1/8"

Imprint: H 3/4" x W 1 1/2"

Weight: 50 pcs / 28.6 lbs



12	50	100	250 (4C)
\$27.90	\$25.90	\$23.90	\$22.50

**Deluxe gift box included.*



high quality sound & longer playtime

1. Bluetooth V4.2
2. Speaker: 5 W
3. Battery: rechargeable li-ion 1,200 mAh
4. Wireless range: 33 ft/10 meters
5. Playtime: up to 10 hours
6. Noise reduction and echo cancellation
7. Multi-band configurable equalizer
8. Hands free
9. TF card slot



■ RS801 **NEW**

Stylish design, high performance driver, with built-in rechargeable 1200 mAh li-ion battery to achieve up to 10 hours playtime.

Size: Dia 3 3/4" x H 1 11/16"

Imprint: H 1/2" x W 1"

Weight: 50 pcs / 38.65 lbs



12	50	100	250 (4C)
\$28.90	\$25.90	\$24.50	\$23.50

**Deluxe gift box included.*

• price includes a 1 color/position imprint • set-up charge \$55.00(g) • lead time: 3-5 days after final approval
• for overseas direct orders with lower pricing, please inquire • visit www.tomaxusa.com for more bluetooth products

LED Bluetooth Speaker



Deluxe gift box included



■ RS3710

Fantastic bluetooth speaker presented in a Deluxe Gift Box. Watch the Blue LEDs flash while playing your tunes! It is equipped with a TF card slot so it can be operated as a stand-alone music player. As an added bonus, it also comes with a built-in FM Radio tuner. You will enjoy a huge sound coming from this unit. It will surely become your desktop favorite!

Speaker: 3W*1
Battery: rechargeable li-ion 350 mAh

Size: Dia. 2 3/4" x H 1 3/4"
Imprint: H 1/2" x W 1"
Weight: 50 pcs / 35.2 lbs



25	100	250	500 (4C)
\$19.50	\$17.50	\$15.90	\$14.50

**Deluxe gift box included*



- price includes a 1 color/position imprint • set-up charge \$55.00(g) • lead time: 3-5 days after final approval
- for overseas direct orders with lower pricing, please inquire • visit www.tomaxusa.com for more Bluetooth Speaker models

dual high-performance drivers with unique enhanced bass



1. Bluetooth V 4.2
2. Dual speaker: 3.4 W x 2
3. Battery: rechargeable li-ion 2,000 mAh
4. Music play time: 4 hours
(Max Vol.) to 10 hours (50% vol.)
5. Wireless range: 33 ft/10 meters
6. Hands free

RS809 NEW

Quality runway metal design w/built-in rechargeable 2,000 mAh li-ion battery. Dual 3.4W full-bodied stereo, realized through dual high-performance drivers and an unique enhanced bass.

Size: H 2 3/16" x W 8 11/16" x D 1 1/8"

Imprint: H 3/4" x W 2"

Weight: 50 pcs / 51 lbs



12	50	100	250 (4C)
\$39.90	\$36.90	\$34.90	\$33.90

**Deluxe gift box included*

• price includes a 1 color/position imprint • set-up charge \$55.00(g) • lead time: 3-5 days after final approval
 • for overseas direct orders with lower pricing, please inquire • visit www.tomaxusa.com for more bluetooth products

dual speakers

1. Bluetooth V3.0
2. Loud Speaker: 3W*2 + super bass
3. Battery: rechargeable li-ion 400 mAh
4. Wireless range: 33 ft/10 meters
5. Hands free



■ RS946

When listening to music at your desk, the speaker is the perfect place to set your phone or tablet. If you're watching a movie, amplify your experience anywhere you go. This speaker is perfect for when you know you're going to be in one place for a while.

Size: H 2 3/16" x W 4 1/8" X D 3 15/16"
 Imprint: H 1/2" x W 2"
 Weight: 50 pcs / 42.7 lbs

25	100	250	500 (4C)
\$20.90	\$18.90	\$17.90	\$16.90

- price includes a 1 color/position imprint • set-up charge \$55.00(g) • lead time: 3-5 days after final approval
- for overseas direct orders with lower pricing, please inquire • visit www.tomaxusa.com for more bluetooth products



retro design,
superior quality



■ RS2808W

For a truly remarkable bluetooth speaker, nothing says quality like real wood and fabric. Capitalize on this retro look with contemporary quality and a slim profile for easy travel. Huge sound and a stylish case at an affordable price!

Bluetooth V4.1
Speaker: 3W
Battery: Rechargeable li-ion 500 mAh
Wireless range: 33 ft/10 meter

Size: H 2 9/16" x W 2 9/16" x D 7/8"
Imprint: H 1" x W 1"
Weight: 40 pcs / 21.5 lbs

12	25	100	250 (4C)
\$45.90	\$42.90	\$41.50	\$39.90

**Deluxe gift box included.*

• price includes a 1 color/position imprint • set-up charge \$55.00(g) • lead time: 3-5 days after final approval
• for overseas direct orders with lower pricing, please inquire • visit www.tomaxusa.com for more bluetooth products

■ RS902

This fun bluetooth speaker features a unique design perfectly suited for ultimate portability. With loud sound and built in controls, you can take this anywhere you go!

Size: H 3 1/2" x Dia: 2 1/2"

Imprint: H 3/8" x W 1"

Weight: 50 pcs / 28.6lbs



25	100	250	500 (4C)
\$17.90	\$15.90	\$14.90	\$13.90

1. Bluetooth V3.0
2. Speaker: 3W
3. Battery: rechargeable li-ion 350 mAh
4. Wireless range: 33 ft/10 meters
5. Hands free



- price includes a 1 color/position imprint • set-up charge \$55.00(g) • lead time: 3-5 days after final approval
- for overseas direct orders with lower pricing, please inquire • visit www.tomaxusa.com for more bluetooth products

■ RS929

Want to stand out? Then this contemporary geometry speaker is exactly what you need. With huge sound, easy to use controls, and a futuristic design, it's a great choice for new and different.

Size: H 2 3/8" x W 6 5/8" x D 1"

Imprint: H 1/2" x W 1 1/2"

Weight: 50 pcs / 27.5 lbs

25	100	250	500 (4C)
\$22.90	\$20.90	\$19.90	\$18.90

1. Bluetooth V3.0
2. Wireless range: 33 ft/10 meters
3. Frequency range: 200HZ-20KHZ
4. Impedance: 4 Ω
5. Sensitivity: ≥ 90 db
6. S/N: > 48 db
7. Battery: 400mAh
8. Play time: 2-3h
9. Hands free
10. Loud speaker: 3W*2



• price includes a 1 color/position imprint • set-up charge \$55.00(g) • lead time: 3-5 days after final approval
 • for overseas direct orders with lower pricing, please inquire • visit www.tomaxusa.com for more bluetooth products



■ HB301

Stylish bluetooth headphones.
Over the ear design.

Bluetooth V4.0, can connect
with two phones simultaneously
battery capacity: 120 mAh
Signal Distance: 33 FT/ 10 Meters
Talk/Music Time: 7 hours;
Standby Time: 180 hours
Charge Time: 2.5 hours

Size: W 1"
Imprint: H 1" x W 3/4"
Weight: 48 pcs / 30.2 lbs



12	50	100	250 (4C)
\$32.90	\$28.50	\$26.90	\$25.90



- price includes a 1 color/position imprint • set-up charge \$55.00(g) • lead time: 3-5 days after final approval
- for overseas direct orders with lower pricing, please inquire • visit www.tomaxusa.com for more Bluetooth Speaker models



foldable bluetooth headphone

1. Speaker: Φ 40mm Dynamic type
2. Wireless distance range: 33 FT/ 10 Meters
3. Bluetooth version: V 4.2
4. Battery: 200 mAh
5. Play/ Talk time: 3/4 hours
6. Standby time: 300 hours
7. Charging time: 2 hours
8. Aux & TF card slot
9. Hands free



HB302 **NEW**

Size: H 7" x W 6 1/2" x D 3 1/4"
 Imprint: H 1 1/2" x W 1 1/2"
 Weight: 20 pcs / 13.2 lbs

12	50	100	250 (4C)
\$27.90	\$25.50	\$23.50	\$21.90



• price includes a 1 color/position imprint • set-up charge \$55.00(g) • lead time: 3-5 days after final approval
 • for overseas direct orders with lower pricing, please inquire • visit www.tomaxusa.com for more bluetooth products



1. Speaker: 40mm Dynamic type
2. Wireless distance range: 33 FT/ 10 Meters
3. Bluetooth version: V 4.2
4. Battery: 200 mAh
5. Play/ Talk time: 3/4 hours
6. Standby time: 300 hours
7. Charging time: 2 hours
8. Aux & TF card slot
9. Hands-free

HB303 NEW

Foldable bluetooth headphone.

Size: H 7 1/2" x W 6 3/4" x D 3 1/4"

Imprint: H 1" x W 1"

Weight: 20 pcs / 14 lbs

12	50	100	250 (4C)
\$24.50	\$22.50	\$20.50	\$19.90



- price includes a 1 color/position imprint • set-up charge \$55.00(g) • lead time: 3-5 days after final approval
- for overseas direct orders with lower pricing, please inquire • visit www.tomaxusa.com for more bluetooth products

1. Speaker: Φ 40mm Dynamic type
2. Wireless distance range: 33 FT/ 10 Meters
3. Bluetooth version: V 4.2
4. Battery: 300 mAh
5. Play/ Talk time: 7/ 7 hours
6. Standby time: 70 hours
7. Charging time: 1.5 hours
8. Aux
9. Hands free



HB306 NEW

Retro bluetooth headphone.

Size: H 7 3/4" x W 7" x D 2 1/2"
 Imprint: H 1" x W 1"
 Weight: 20 pcs / 9.9 lbs

12	50	100	250 (4C)
\$31.90	\$29.50	\$27.50	\$25.90



• price includes a 1 color/position imprint • set-up charge \$55.00(g) • lead time: 3-5 days after final approval
 • for overseas direct orders with lower pricing, please inquire • visit www.tomaxusa.com for more bluetooth products



listen freely
anytime
anywhere

■ EB201

Free up your hands with this affordable, compact, and high equality Bluetooth earpiece. It stores enough reserves for up to 6 hours of talk time or over 80 hours while in stand-by!

Bluetooth protocol: A2DP, AVRCP, HFP, HSP
Bluetooth V4.0 version

Talking time: 4-6 hours; Playing time: 3-4 hours

Standby time: 55 hours; Battery capacity: 55 mAh

Size: H 2" x W 13/16" x D 5/8"

Imprint: H 3/4" x W 1/4"

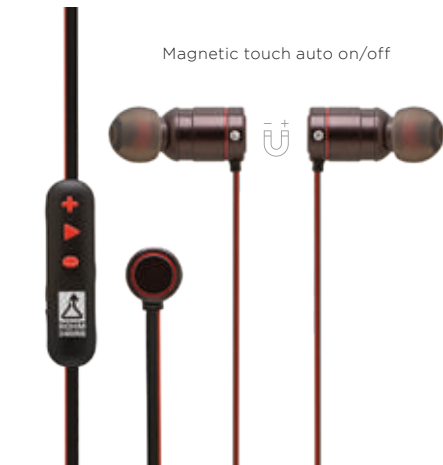
Weight: 400 pcs / 31.8 lbs



100	250	500 (3C)
\$7.90	\$7.50	\$6.95

- price includes a 1 color/position imprint • set-up charge \$55.00(g) • lead time: 3 weeks after final approval
- for overseas direct orders with lower pricing, please inquire • visit www.tomaxusa.com for more bluetooth products

magnetic
touch auto
on/off
earphone



Magnetic touch auto on/off

1. Bluetooth V4.2
2. Intelligent magnetic touch switch
3. Diversion sweatproof cable
4. Talking time: 5-6 hours
5. Playing time: 5 hours
6. Standby time: 150 hours
7. Battery capacity: 80mAh

EB605

For the most active music enthusiasts, these sport style earbuds have all the features you need to enjoy crystal clear sound and to make/receive calls while you enjoy your favorite work out!

Size: 17 3/4" in Length
Imprint: H 1/8" x W 1"
Weight: 50 pcs / 11.1 lbs

100	250	500 (3C)
\$24.90	\$23.90	\$22.90

• price includes a 1 color/position imprint • set-up charge \$55.00(g) • lead time: 3 weeks after final approval
• for overseas direct orders with lower pricing, please inquire • visit www.tomaxusa.com for more bluetooth products



wireless bluetooth earphones

1. Bluetooth V4.1
2. Working Distance Range: ≤ 10 M/ 33FT
3. Frequency Range: 2.4026GHz-2.480GHz
4. Battery Capacity: 80 mAh
5. Charging time: ≤ 2 hours
6. Talk/Music time: ≥ 4.5 hours
7. Standby Time: ≥ 175 hours
8. Hands free call microphone



Full color imprint available
on clear case, please inquire.

EB311

Wireless bluetooth earphones. Enjoy music and hands-free calling with over-the-ear design.

Size: H 2 1/4" x W 1 1/2" x D 1 1/4"
(one side earphone include hook)
Imprint: H 3/8" x W 1/2"
Weight: 100 pcs / 27.8 lbs



12	50	100	250 (4C)
\$24.90	\$22.90	\$21.90	\$20.90

magnetic
bluetooth
earphones



1. Bluetooth V3.0 + EDR
2. Frequency response: 20-20000Hz
2.4GHz
3. Signal distance: 33 FT/ 10 Meters
4. Play/Talk: 4 hours
Standby time: 150 hours
5. Speaker impedance: 32 Ω (ohm)
6. Charge input: 5V 80mA
7. Charge time: ≤2 hours

EB966

Bluetooth earphones can often be big and bulky, but with these magnetic earbuds you're able to keep them well organized. With a built-in microphone for making and receiving calls. Great sound quality at an affordable price!

Size: 27" in Length
 Imprint: H 1 1/2" x W 2 1/2" (on clear case)
 Weight: 100 pcs / 7.6 lbs

25	100	250	500 (4C)
\$17.90	\$15.90	\$15.50	\$14.90

• price includes a 1 color/position imprint • set-up charge \$55.00(g) • lead time: 3-5 days after final approval
 • for overseas direct orders with lower pricing, please inquire • visit www.tomaxusa.com for more bluetooth products

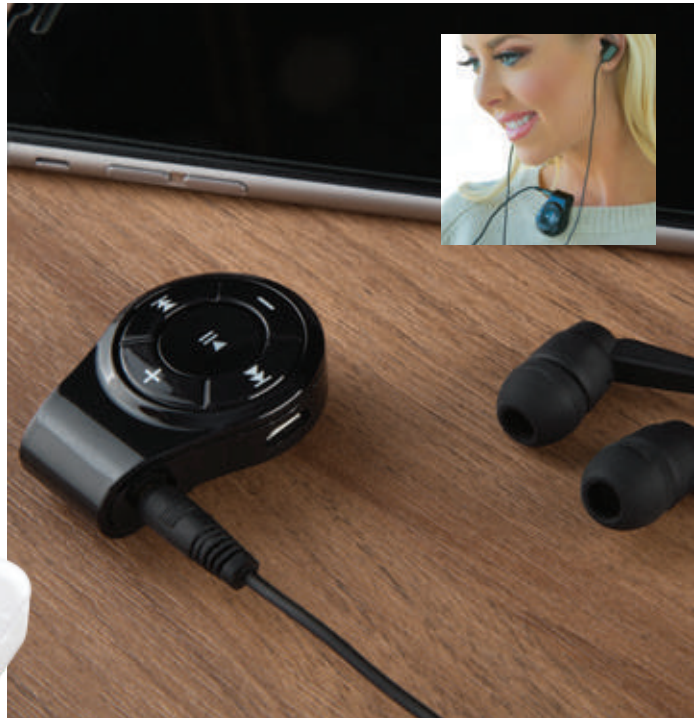
Make your favorite headphones wireless with this brand new Bluetooth adapter. Simply plug in your earphones, pair the device to your phone & you're good to go. Use it to make calls, listen to music, or simply enjoy the hands-free experience with up to 49 feet of range. (Ear buds not included)

EB902

- * Bluetooth version: V 4.1
- * Battery: 3.7V 100 mAh
- * Play/Talk time: 5 hours
- * Charge time: 1 hour, micro USB
- * Production Time: 3-5 days

Size: H 1 3/4" x W 1 1/4" x D 3/4"
 Clear Case: H 2 3/4" x W 2 3/4" x D 1 1/4"
 Imprint: H 1/8" x W 1/2"
 H 1 1/2" x W 1 1/2" (on clear case)
 Weight: 200 pcs / 27 lbs

12	50	100	250 (4C)
\$19.90	\$17.90	\$16.90	\$15.90



EB108

Bluetooth adapter.

- * Bluetooth V4.2
- * Playing time: 6-8 hours
- * Standby time: 200 hours
- * Battery capacity: 180 mAh

Size: H 2" x W 1 5/8" x D 11/16"
 Imprint: H 1 5/16" x W 1 3/16"
 Weight: 400 pcs / 45.9 lbs

100	250	500 (3C)
\$10.90	\$9.90	\$8.90

*Epoxy dome logo or flashing light logo:
 Add \$0.60 (G)/pc. Earbuds not included,
 call factory for more earbuds option



earbuds with dual drives

1. Impedance: $16 \pm 5 \Omega$, \varnothing : 8MM*2
2. Frequency response: 20HZ-20KHZ
3. Sensitivity: 95 ± 5 DB
4. Cable: TPE material, 48" long
5. Microphone sensitivity: -48 DB ± 3 DB
6. Volume control

■ EP1101

It's hard to tell if these headphones look or sound better. With a build-in microphone, volume control, and sleek metallic design, these are guaranteed to be a hit.

Size: 4 Feet in Length
Imprint: H 1/8" x W 7/8"
Weight: 400 pcs / 18.7 lbs

25	100	250	500 (4C)
\$18.90	\$16.50	\$14.90	\$13.90

*Optional Upgrade Packaging P42.



■ EP1103

Crystal clear sound, powerful bass, and a fashion forward design make these in-ear headphones a great choice for all ages. Includes a microphone and volume control so you never lose functionality.

Size: 4 Feet in Length
Imprint: H 1/8" x W 7/8"
Weight: 400 pcs / 15.4 lbs

25	100	250	500 (4C)
\$14.90	\$12.50	\$10.90	\$9.90

*Optional Upgrade Packaging P42.

Supreme sound speakers with triangular diamond cut casing

1. Impedance: 16 ± 5 ff, \varnothing : 10MM
2. Frequency response: 20HZ-20KHZ
3. Sensitivity: 104 ± 5 DB
4. Cable: TPE material, 48" long
5. Microphone sensitivity: -48 DB ± 3 DB
6. Volume control





zipper function earphone

■ EP328 US Patent #US D767,532 S

Quality earphones with microphone and US patented tangle-free connector. Simply slide the connector up and your earphones are ready to use.

Size: 4 Feet in Length
Imprint: H 1/4" x W 1/4"
Weight: 400 pcs / 25 lbs



25	100	250	500 (4C)
\$10.50	\$8.90	\$8.50	\$7.95

*Optional Package: P42.



■ EP357

Stereo earphones with microphone. Ultra soft in-ear silicone tips block out sound for noise cancellation.

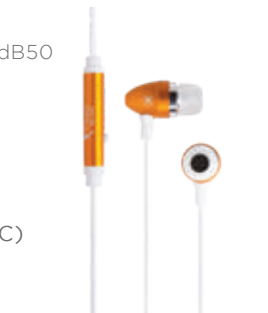
* Frequency response: 20 Hz 20 KHz
* Microphone: Condenser type
* Plug: 3.5 mm Stereo Plug
* Sensitivity: 8dB, 1V/Pa at 1KHz-52dB50

Size: 4 Feet in Length
Imprint: H 1/8" x W 7/8"
Weight: 500 pcs / 22 lbs



25	100	250	500 (4C)
\$10.50	\$8.90	\$8.50	\$7.95

*Optional Upgrade Packaging P42.



quality stereo earphones with mic

1. Frequency response: 20Hz-20,000Hz
2. Sensitivity: 93dB±3dB
3. Microphone sensitivity: -42dB±3dB
4. Plug: 3.5mm stereo gold pin
5. Inline microphone & on/off control



EP369

■ EP368

Quality earphones with microphone comes in a nice plastic case. Comfortable silicone tips block out sound for noise cancellation and stereo sound.



■ EP369

High quality earphones with soft silicone tips and stereo sound. Smooth flat microphone and volume control button. Presented in a nice plastic case.



EP368

EP368/ EP369

Size: 4 Feet in Length
 Clear Case: H 2 1/2" x W 2 1/2" x D 3/4"
 Imprint: H 1 1/2" x W 1 1/2" (case)
 Weight: 300 pcs / 26.4 lbs

25	100	250	500 (4C)
\$10.90	\$8.90	\$8.50	\$7.95

- price includes a 1 color/position imprint • set-up charge \$55.00(g) • lead time: 3-5 days after final approval
- for overseas direct orders with lower pricing, please inquire • visit www.tomaxusa.com for more earphone products

upgraded packaging options



P15

Large zipper pouch
H 5 1/4" x W 7 1/2" x D 1 3/4"
\$8.00(C) blank goods



P42

Small zipper pouch
H 2 3/4" x W 3 7/8" x D 1 3/8"
\$2.80(C) blank goods



P56

Medium zipper pouch
H 4" x W 5" x D 1 3/4"
\$6.00(C) blank goods



P85

Extra large zipper pouch
H 5 3/4" x W 8 1/2" x D 2 1/2"
\$10.00(C) blank goods



B24

Deluxe gift box
H 4" x W 6" x D 1 7/8"
\$3.00(C) blank goods



B32

Long deluxe gift box
H 4" x W 7 1/2" x D 1 3/4"
\$4.50(C) blank goods



GB3206

Full deluxe gift box
H 8 1/8" x W 8 1/8" x D 2 7/8"
\$10.00(C) blank goods



GP72 NEW

AD710 + ED825 + P56.
 UL Listed 1A wall charger and retractable
 2-in-1 cable tech gift set. Packaged in a
 nice zipper case.

Imprint (adapter): H 3/4" x W 1"

Imprint (cable): H 1" x W 1"

Weight: 50 pcs / 21 lbs

25	50	100	250 (4C)
\$21.90	\$19.90	\$18.50	\$17.90



5,000 mAh



GP7189

PC3589 + AD710 + P15.
 Faux leather 5000 mAh power bank and
 UL Listed 1A wall charger tech gift set.
 Packaged in a nice zipper case.

Imprint (adapter): H 3/4" x W 1"

Imprint (power bank): H 3/8" x W 3/4"

Weight: 50 pcs / 37 lbs



25	50	100	250 (4C)
\$32.30	\$29.90	\$27.90	\$26.50



UL battery

• price includes a 1 color/position imprint on each item
 • set-up charge \$135.00(g) for 3 item gift sets or \$180.00(g) for 4 item gift sets • lead time: 3-5 days after final approval
 • for overseas direct orders with lower pricing, please inquire • visit www.tomaxusa.com for more gift set models



■ GP5489

US Patent #US D767,532 S

MS1829 + EP328 + P56.

Foldable wireless mouse and tangle-free earphone tech gift set. Packaged in a nice zipper case.

Imprint (mouse): H 5/8" x W 1 3/8"

Imprint (earphone): H 3/8" x W 1/4"

Weight: 50 pcs / 26.8 lbs



25	50	100	250 (4C)
\$31.90	\$28.90	\$27.90	\$26.95

■ GP1599

PC3589 + MS1829 + P15.

Faux leather 5000 mAh power bank and foldable wireless mouse tech gift set. Packaged in a nice zipper case.

Imprint (mouse): H 5/8" x W 1 3/8"

Imprint (power bank): H 1 1/2" x W 1 1/2"

Weight: 50 pcs / 22.5 lbs



25	50	100	250 (4C)
\$40.90	\$36.90	\$35.90	\$33.90

UL battery

- price includes a 1 color/position imprint on each item
- set-up charge \$135.00(g) for 3 item gift sets or \$180.00(g) for 4 item gift sets • lead time: 3-5 days after final approval
- for overseas direct orders with lower pricing, please inquire • visit www.tomaxusa.com for more gift set models

GP56831

PC5056hb + ED831 + AD710 + P15.
 5,000 mAh heartbeat/breathing power bank and wall adaptor with 2-in-1 charging cable tech gift set. Packaged in a nice zipper case.

Imprint (power bank): H 3/4" x W 1 1/2"
 Imprint (cable): H 5/8" x W 5/16"
 Imprint (adapter): H 3/4" x W 1"
 Weight: 50 pcs / 42 lbs

25	50	100	250 (4C)
\$39.60	\$36.20	\$34.20	\$31.95



GP56871

PC5680 + ED831 + AD710 + P15.
 6000 mAh metal disc power bank with 2-in-1 charging cable and UL Listed 1A wall adapter tech gift set, packaged in a nice zipper case.

Imprint (power bank): H 2" x W 2"
 Imprint (cable): H 5/8" x W 5/16"
 Imprint (adapter): H 3/4" x W 1"
 Weight: 50 pcs / 42 lbs



25	50	100	250 (4C)
\$47.90	\$44.90	\$41.90	\$39.90



UL battery

• price includes a 1 color/position imprint on each item
 • set-up charge \$135.00(g) for 3 item gift sets or \$180.00(g) for 4 item gift sets • lead time: 3-5 days after final approval
 • for overseas direct orders with lower pricing, please inquire • visit www.tomaxusa.com for more gift set models



6,000 mAh

■ GP5689

PC5680 + ED569 + P56.

6000 mAh metal disc power bank with Apple MFi Certified 2-in-1 charging cable tech gift set, packaged in a nice zipper case.

Imprint (power bank): H 2" x W 2"

Imprint (cable): H 3/8" x W 1/4"

Weight: 50 pcs / 34 lbs



25	50	100	250 (4C)
\$54.90	\$51.90	\$48.90	\$46.90



UL battery



- price includes a 1 color/position imprint on each item
- set-up charge \$135.00(g) for 3 item gift sets or \$180.00(g) for 4 item gift sets • lead time: 3-5 days after final approval
- for overseas direct orders with lower pricing, please inquire • visit www.tomaxusa.com for more gift set models



UL battery

6,000 mAh

GP5627 NEW

PC5680 + AD710 + ED20 + P15.
 6,000 mAh metal disc power bank with retractable 2-in-1 charging cable and a wall charger tech gift set, packaged in a nice zipper case.

Imprint (power bank): H 2" x W 2"
 Imprint (adapter): H 3/4" x W 1"
 Imprint (cable): H 1" x W 1"
 Weight: 50 pcs / 48 lbs

25	50	100	250 (4C)
\$53.90	\$50.90	\$47.90	\$45.90



• price includes a 1 color/position imprint on each item
 • set-up charge \$135.00(g) for 3 item gift sets or \$180.00(g) for 4 item gift sets • lead time: 3-5 days after final approval
 • for overseas direct orders with lower pricing, please inquire • visit www.tomaxusa.com for more gift set models

5,000 mAh



■ GP50831

PC5056 + AD710 + ED831 + P15.
Soft rubberized 5000 mAh dual USB
power bank and wall adapter with
2-in-1 charging cable tech gift set.
Packaged in a nice zipper case.

Imprint (power bank): H 1 1/2" x W 1 1/2"
Imprint (adapter): H 3/4" x W 1"
Imprint (cable): H 5/8" x W 5/16"
Weight: 50 pcs / 38 lbs



25	50	100	250 (4C)
\$35.90	\$33.90	\$31.90	\$29.90



- price includes a 1 color/position imprint on each item
- set-up charge \$135.00(g) for 3 item gift sets or \$180.00(g) for 4 item gift sets • lead time: 3-5 days after final approval
- for overseas direct orders with lower pricing, please inquire • visit www.tomaxusa.com for more gift set models



6,600 mAh

■ GP6836

PC6803 + AD710 + ED831 + P15.
 2-in-1 power bank + bluetooth earbud and
 UL Listed wall adapter with 2-in-1 charging
 cable tech gift set. Packaged
 in a nice zipper case.

Imprint (power bank): H 1 1/4" x W 2"
 Imprint (adapter): H 3/4" x W 1"
 Imprint (cable): H 3/8" x W 1/4"
 Weight: 25 pcs / 25 lbs

25	50	100	250 (4C)
\$49.90	\$46.90	\$44.90	\$42.90



• price includes a 1 color/position imprint on each item
 • set-up charge \$135.00(g) for 3 item gift sets or \$180.00(g) for 4 item gift sets • lead time: 3-5 days after final approval
 • for overseas direct orders with lower pricing, please inquire • visit www.tomaxusa.com for more gift set models



■ GP85729

PC8520 + ED529 + AD710 + P15.

Contemporary two-tone metal 5000 mAh power bank and Apple MFi Certified 2-in-1 cable with UL Listed wall adapter tech gift set. Packaged in a nice zipper case.

Imprint (power bank): H 2 1/2" x W 1 1/2"

Imprint (cable): H 3/8" x W 1/4"

Imprint (adapter): H 3/4" x W 1"

Weight: 50 pcs / 45 lbs



25	50	100	250 (4C)
\$53.90	\$50.90	\$48.90	\$46.90



Made for
 iPod iPhone iPad



- price includes a 1 color/position imprint on each item
- set-up charge \$135.00(g) for 3 item gift sets or \$180.00(g) for 4 item gift sets • lead time: 3-5 days after final approval
- for overseas direct orders with lower pricing, please inquire • visit www.tomaxusa.com for more gift set models

■ GP5529

PC5115 + ED529 + P15.
 10000 mAh stylish metal power bank with 6.5 feet Apple MFi Certified 2-in-1 charging cable tech gift set, packaged in a nice zipper case.

Imprint (power bank): H 2 1/2" x W 1 1/2"

Imprint (cable): H 3/8" x W 1/4"

Weight: 25 pcs / 27.35 lbs



25	50	100	250 (4C)
\$61.90	\$57.90	\$55.90	\$53.90



10,000 mAh



• price includes a 1 color/position imprint on each item
 • set-up charge \$135.00(g) for 3 item gift sets or \$180.00(g) for 4 item gift sets • lead time: 3-5 days after final approval
 • for overseas direct orders with lower pricing, please inquire • visit www.tomaxusa.com for more gift set models

■ GB582 NEW

PC5115 + RS820 + ED20 + GB3206BOX.
10,000 mAh stylish metal power bank
with bluetooth speaker and retractable
cable tech gift set. Packaged in a
deluxe gift box

Imprint (power bank): H 2 1/2" x W 1 1/2"

Imprint (speaker): H 3/4" x W 1 1/2"

Imprint (cable): H 1" x W 1"

Weight: 20 pcs / 40 lbs

25	50	100	250 (4C)
\$79.90	\$76.90	\$72.90	\$69.90



- price includes a 1 color/position imprint on each item
- set-up charge \$135.00(g) for 3 item gift sets or \$180.00(g) for 4 item gift sets • lead time: 3-5 days after final approval
- for overseas direct orders with lower pricing, please inquire • visit www.tomaxusa.com for more gift set models



Pick your items, and make your gift set



PC5115
10,000 mAh power bank
See Page 45



RS820
Bluetooth speaker
See Page 66



ED20
Retractable 2-in-1 cable
See Page 21



GB3206
Full deluxe gift box
See Page 86

10,000 mAh



• price includes a 1 color/position imprint on each item
 • set-up charge \$135.00(g) for 3 item gift sets or \$180.00(g) for 4 item gift sets • lead time: 3-5 days after final approval
 • for overseas direct orders with lower pricing, please inquire • visit www.tomaxusa.com for more gift set models

■ GB5169

PC5110 + ED569 + B32.

Soft rubberized 10000 mAh dual USB power bank with bright LED light and Apple MFi Certified cable tech gift set. Packaged in a deluxe gift box.

Imprint (power bank): H 3" x W 1 1/2"

Imprint (cable): H 3/8" x W 1/4"

Weight: 50 pcs / 50 lbs



25	50	100	250 (4C)
\$49.40	\$45.40	\$43.40	\$41.40



UL battery

10,000 mAh



- price includes a 1 color/position imprint on each item
- set-up charge \$135.00(g) for 3 item gift sets or \$180.00(g) for 4 item gift sets • lead time: 3-5 days after final approval
- for overseas direct orders with lower pricing, please inquire • visit www.tomaxusa.com for more gift set models



GP8995

PC8019 + ED569 + P15.
 Contemporary two-tone metal 10000 mAh power bank and Apple MFi Certified 2-in-1 cable tech gift set. Packaged in a nice zipper case.

Imprint (power bank): H 3" x W 1 5/8"
 Imprint (cable): H 3/8" x W 1/4"
 Weight: 25 pcs / 28 lbs



25	50	100	250 (4C)
\$58.90	\$54.90	\$52.90	\$49.90



• price includes a 1 color/position imprint on each item
 • set-up charge \$135.00(g) for 3 item gift sets or \$180.00(g) for 4 item gift sets • lead time: 3-5 days after final approval
 • for overseas direct orders with lower pricing, please inquire • visit www.tomaxusa.com for more gift set models

mix & match

Create a gift set that's unique and special



QC5110 See Page 34



GP588



PC8520 See Page 42



GP828

■ GP588 **NEW**

QC5110 + ED868 + P15.
8000 mAh Power bank with wireless charger and a 3-in-1 cable tech gift set.
Packaged in a nice zipper pouch.

Imprint (power bank): H 1" x W 1 1/2"
Imprint (cable): H 3/8" x W 1/4"
Weight: 50 pcs / 49 lbs

25	50	100	250 (4C)
\$47.90	\$44.90	\$42.90	\$39.90



UL battery

■ GP828 **NEW**

PC8520 + ED868 + P15.
Contemporary two-tone metal 5,000 mAh power bank and 3-in-1 cable tech gift set.
Packaged in a nice zipper case

Imprint (power bank): H 2 1/2" x W 1 1/2"
Imprint (cable): H 3/8" x W 1/4"
Weight: 50 pcs / 39 lbs

25	50	100	250 (4C)
\$34.90	\$31.90	\$30.90	\$29.90



- price includes a 1 color/position imprint on each item
- set-up charge \$135.00(g) for 3 item gift sets or \$180.00(g) for 4 item gift sets • lead time: 3-5 days after final approval
- for overseas direct orders with lower pricing, please inquire • visit www.tomaxusa.com for more gift set models

GP588

8,000 mAh



GP828

5,000 mAh

• price includes a 1 color/position imprint on each item
• set-up charge \$135.00(g) for 3 item gift sets or \$180.00(g) for 4 item gift sets • lead time: 3-5 days after final approval
• for overseas direct orders with lower pricing, please inquire • visit www.tomaxusa.com for more gift set models



PC8203 See Page 41

= GP827



PC608 See Page 40

= GP867

GP827 NEW

PC8203 + ED567 + P15.
High capacity 20,000 mAh Type C input/output power bank and MFi Apple certified 3-in-1 cable tech gift set. Packaged in a nice zipper case.

Imprint (power bank): H 2 1/2" x W 1 1/2"
Imprint (cable): H 3/8" x 1/4"
Weight: 25 pcs / 38 lbs

25	50	100	250 (4C)
\$79.90	\$75.90	\$72.90	\$69.90



GP867 NEW

PC608 + ED567 + P15.
Fast charge Type C input/output 10,000 mAh power bank and MFi Apple certified 3-in-1 cable tech gift set. Packaged in a nice zipper case.

Imprint (power bank): H 2" x W 1 1/2"
Imprint (cable): H 3/8" x W 1/4"
Weight: 25 pcs / 24 lbs

25	50	100	250 (4C)
\$61.90	\$57.90	\$54.50	\$52.90



- price includes a 1 color/position imprint on each item
- set-up charge \$135.00(g) for 3 item gift sets or \$180.00(g) for 4 item gift sets • lead time: 3-5 days after final approval
- for overseas direct orders with lower pricing, please inquire • visit www.tomaxusa.com for more gift set models

GP827

20,000 mAh



GP867

10,000 mAh

• price includes a 1 color/position imprint on each item
• set-up charge \$135.00(g) for 3 item gift sets or \$180.00(g) for 4 item gift sets • lead time: 3-5 days after final approval
• for overseas direct orders with lower pricing, please inquire • visit www.tomaxusa.com for more gift set models



15,000 mAh



■ GP69715

PC2815 + ED569 + AD712 + P85.

Metallic 15000 mAh wavy power bank and Apple MFi Certified cable with UL Listed dual port wall adapter tech gift set. Packaged in a nice zipper case.

Imprint (power bank): H 3" x W 3"

Imprint (cable): H 3/8" x W 1/4"

Imprint (adapter): H 1" x W 2"

Weight: 20 pcs / 37 lbs

25	50	100	250 (4C)
\$79.90	\$75.90	\$72.90	\$69.90



- price includes a 1 color/position imprint on each item
- set-up charge \$135.00(g) for 3 item gift sets or \$180.00(g) for 4 item gift sets • lead time: 3-5 days after final approval
- for overseas direct orders with lower pricing, please inquire • visit www.tomaxusa.com for more gift set models

■ GP85579

PC2815 + AD714 + EP369 + P85.

Metallic 15000 mAh wavy power bank with 4 port wall adapter (UL Listed) and earphone tech gift set. Packaged in a nice zipper case.

Imprint (power bank): H 2" x W 2"

Imprint (adapter): H 1" x W 1 3/4"

Imprint (earphone): H 1 1/2" x W 1 1/2"

Weight: 20 pcs / 39 lbs

25	50	100	250 (4C)
\$79.90	\$73.90	\$71.90	\$68.90



15,000 mAh

- price includes a 1 color/position imprint on each item
- set-up charge \$135.00(g) for 3 item gift sets or \$180.00(g) for 4 item gift sets • lead time: 3-5 days after final approval
- for overseas direct orders with lower pricing, please inquire • visit www.tomaxusa.com for more gift set models



■ GP36529

HB301 + AD3622 + ED529 + P85.
Stylish bluetooth headphone with international travel adapter and 6.5 FT Apple MFi Certified 2-in-1 charging cable tech gift set. Packaged in a nice zipper case.

Imprint (headphone): H 1" x W 3/4"
Imprint (adapter): H 5/8" x W 1 1/2"
Imprint (cable): H 3/8" x W 1/4"
Weight: 20 pcs / 31 lbs

25	50	100	250 (4C)
\$85.20	\$77.40	\$73.80	\$71.20

Made for
 iPod iPhone iPad

- price includes a 1 color/position imprint on each item
- set-up charge \$135.00(g) for 3 item gift sets or \$180.00(g) for 4 item gift sets • lead time: 3-5 days after final approval
- for overseas direct orders with lower pricing, please inquire • visit www.tomaxusa.com for more gift set models

■ GP6869

PR6801 + ED569 + AD712 + P85.

3-in-1 power bank, Bluetooth speaker and Apple MFi Certified 2-in-1 cable with UL Listed dual port wall adapter tech gift set. Packaged in a nice zipper case.

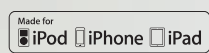
Imprint (power bank): H 3/4" x W 2"

Imprint (cable): H 3/8" x W 1/4"

Imprint (adapter) H 1" x W 1 1/2"

Weight: 20 pcs / 32 lbs

25	50	100	250 (4C)
\$92.90	\$87.90	\$83.90	\$79.90



5,200 mAh

- price includes a 1 color/position imprint on each item
- set-up charge \$135.00(g) for 3 item gift sets or \$180.00(g) for 4 item gift sets • lead time 3-5 days after final approval
- for overseas direct orders with lower pricing, please inquire • visit www.tomaxusa.com for more gift set models



5,000 mAh



■ GB82231

PC8520 + RS902 + ED831 + Deluxe Gift Box. Contemporary two-tone metal 5000 mAh power bank with unique fun design bluetooth speaker and 2-in-1 charging cable tech gift set. Packaged in a deluxe gift box.

Imprint (power bank): H 2 1/2" x W 1 1/2"
 Imprint (speaker): H 3/8" x W 1"
 Imprint (cable): H 5/8" x W 5/16"
 Weight: 20 pcs / 32 lbs



25	50	100	250 (4C)
\$51.90	\$48.90	\$45.90	\$42.90



- price includes a 1 color/position imprint on each item
- set-up charge \$135.00(g) for 3 item gift sets or \$180.00(g) for 4 item gift sets • lead time: 3-5 days after final approval
- for overseas direct orders with lower pricing, please inquire • visit www.tomaxusa.com for more gift set models



10,000 mAh

GB89270

PC8019 + RS3710 + MS1829 + Deluxe Gift Box.
Contemporary two-tone metal 10000 mAh power bank with bluetooth speaker and wireless foldable mouse tech gift set. Packaged in a deluxe gift box.



Imprint (power bank): H 3" x W 1 5/8"
Imprint (speaker): H 1/2" x W 1"
Imprint (mouse): H 5/8" x W 1 3/8"
Weight: 20 pcs / 46 lbs



25	50	100	250 (4C)
\$73.90	\$69.90	\$65.90	\$62.90



• price includes a 1 color/position imprint on each item
• set-up charge \$135.00(g) for 3 item gift sets or \$180.00(g) for 4 item gift sets • lead time: 3-5 days after final approval
• for overseas direct orders with lower pricing, please inquire • visit www.tomaxusa.com for more gift set models



ED20

Retractable 2-in-1 cable

See Page 21



RS801

Bluetooth speaker

See Page 67



PC8203

20,000 mAh power bank

See Page 41



GB3206

Full deluxe gift box

See Page 86

GB8212 NEW

PC8203 + RS801 + ED20 + GB3206BOX.
20,000 mAh power bank with high performance bluetooth speaker and 2-in-1 retractable charging cable tech gift set. Packaged in a deluxe gift box.

Imprint (power bank): H 2 1/2" x W 1 1/2"
Imprint (speaker): H 3/8" x W 1"
Imprint (cable): H 1" x W 1"
Weight: 20 pcs / 58 lbs

25	50	100	250 (4C)
\$99.90	\$95.90	\$91.90	\$87.90

- price includes a 1 color/position imprint on each item
- set-up charge \$135.00(g) for 3 item gift sets or \$180.00(g) for 4 item gift sets • lead time: 3-5 days after final approval
- for overseas direct orders with lower pricing, please inquire • visit www.tomaxusa.com for more gift set models



20,000 mAh

• price includes a 1 color/position imprint on each item
• set-up charge \$135.00(g) for 3 item gift sets or \$180.00(g) for 4 item gift sets • lead time: 3-5 days after final approval
• for overseas direct orders with lower pricing, please inquire • visit www.tomaxusa.com for more gift set models



A

AC401	13
AC893	12
AD007	5
AD141	6
AD342	12
AD3622	8
AD489	11
AD710	10
AD712	10
AD714	11

EB

EB108	82
EB1601	65
EB201	78
EB311	80
EB380	13
EB605	79
EB902	82
EB948	64
EB966	81

ED

ED20	21
ED529	15
ED567	17
ED569	15
ED581	18
ED583	24
ED602	24
ED6572	16
ED672	16
ED683	19
ED702	24
ED703	24
ED781	19

ED825	20
ED831	23
ED868	22

EP

EP1101	83
EP1103	83
EP328	84
EP357	84
EP368	85
EP369	85

GB

GB5169	98
GB582	96
GB8212	120
GB82231	108
GB89270	109

GP

GP1599	88
GP36529	106
GP50831	92
GP5489	88
GP5529	95
GP5627	91
GP56831	92
GP56871	89
GP5689	90
GP588	100
GP6836	93
GP6869	107
GP69715	104
GP7189	87
GP72	87
GP827	102
GP828	100

GP85579	105
GP85729	94
GP867	102
GP8995	99

H

HB108	60
HB301	74
HB302	75
HB303	76
HB306	77
HB701	63

M

MS1819	26
MS1827	26
MS1829	25

P

PC123	9
PC2603	30
PC2801	55
PC2806	52
PC2815	46
PC2816	46
PC3589	49
PC5056	38
PC5056hb	36
PC5110	38
PC5110hb	36
PC5115	45
PC5200	38
PC5208	50
PC5519	51
PC5680	35
PC6016	44
PC608	40

PC6350	48
PC6803	56
PC7101	53
PC8019	42
PC8203	41
PC8520	42
PC9508	54
PC9705-UL	52
PR6801	58

Q

QC100	32
QC104	28
QC107	28
QC201	29
QC5110	34
QC602	33

R

RS2808W	71
RS3710	68
RS801	67
RS809	69
RS820	66
RS902	72
RS929	73
RS946	70

Visit www.TomaxUSA.com for our complete product line. Check our updated pricing on website, website pricing prevails. This 2018 catalog supersedes all our previous catalogs.

artwork

- Email artwork: to art@tomaxusa.com in the following PC or MAC versions: Illustrator, Photoshop in EPS, AI formats. Scanned art must be 600 DPI or better and all fonts and/or placed images must be included and 'converted to outlines'(or curves) prior to e-mailing.
- Art touch up: for email or general art \$30.00(g) minimum charge.
- Typesetting: \$10.00(g) minimum charge.

orders

- Acknowledgement: we send via email. Please advise your email address when placing imprinted orders.
- Changes to order and/or artwork: submit by email. If work or services are already performed on the order, additional costs may incur.
- Cancelled orders: submit by email after verbal confirmation with factory. \$30.00(g), plus any production charges incurred up to that time.
- Unimprinted items: Billed at End Quantity Pricing.

sales tax for shipments delivered in CA

On orders with California shipping destinations, the distributor's California resale number is required to avoid sales tax.

samples & proofs

- E proofs: Free for the first proof, further correction will be billed at \$20.00(g) for each proof revision.
- Blank/Random samples: Billed at End Quantity Pricing.
- Pre-production samples: Billed at individual item cost, plus set-up charges and freight costs.

shipping FOB point: Los Angeles, CA

- Drop shipments (domestic): \$10.00(g) per location, plus all freight costs.
- Address correction: \$20.00(g)
- Foreign shipments: please call.
- Post-office shipments: N/A.
- Mailers: flat \$1.50(g). Pre-packed \$5.00(g).
- Weights shown in catalog are approximate.
- Tomax can only guarantee a shipping date of when merchandise leaves our warehouse. We are not financially responsible for consequences resulting from freight carrier delays, errors or failures.

invoicing and terms

- Net 30-day credit terms for pre-approved distributors only. Acceptable forms of payment: Company Check, ACH direct deposit or Wire Transfer only.
- There will be a \$35.00 (g) service charge for each returned check.
- Prepayment payment methods: Company Check, ACH direct deposit, Wire Transfer, Visa or MasterCard.
- Past due invoices: a 2% monthly interest charge will accrue on all past due invoices.

special services

- Rush service: available on most items. Contact factory.
- Gift wrapping: customer provides paper, \$3.00(g) per piece.
- Card/message insertion: \$0.30(g) per piece. Customer provide inserts.

returns

- Must receive prior authorization from the factory, and request must be submitted within 30 days of receipt of merchandise.
- Restocking fee: 15% on unimprinted merchandise.
- Imprinted items and all USB items: Not returnable.

trademark notice

Designs and trademarks herein are for the sole purpose of displaying our imprint capabilities. They are not intended to represent endorsements by the individual companies, nor are they for sale.



■ screen/pad printing

- Set-up charge: \$55.00(g) per color/position/item.
- Run charge: \$0.40(g) each piece. Please refer to the imprint information on the bottom of each product page.
- No repeat set-up charge.
- Copy change: \$25.00(g) per color/position. Applies only to text or taglines which accompany a logo.
- Personalization: call factory



■ full color imprint

Full color / 4 color process:

- Set-up charge: \$100.00(g) per logo.
- Repeat set-up charge: \$50.00(g) per logo.
- Run charge: \$1.00(g) per pc/side.



■ laser engraving

- Set-up charge: \$55.00(g) per position/item.
- Run charge: \$0.75(g) per piece (for up to five lines of copy or a logo plus two lines of copy).
- No repeat set-up charge: Additional run charges on re-orders apply.
- Personalization: call factory



ASI 91435 | SAGE 53942 | PPAI 113176